

WAMBOIN

COMMUNITY  ASSOCIATION

The Whisper

April 2010 CIRCULATION: 1,146

wamboincommunity.asn.au

All proceeds from advertisements after printing costs go to the WAMBOIN COMMUNITY ASSOCIATION, which started the Whisper in 1981 and continues to own it. This Newsletter is distributed to all RMBs in Wamboin and Bywong at the start of each month, except January. Editor is Ned Noel, 17 Reedy Creek Place, Wamboin, 2620, phone 6238-3484. Contributions from residents are valued and the main content. Please email them to nednoel@optusnet.com.au or mail them. The deadline for the next issue is always the last Sunday of the month, 7 pm, so for the May 2010 issue Whisper the deadline is Sunday, April 25, 2010, 7:00 pm, and it will go to deliverers 5 days later.

LIFE THREATENING EMERGENCIES Fire/Police/Ambulance - Dial 000 All Hours

Bungendore Police 6238 1244 Wamboin Fire Brigade Info Centre 6238-3396 Ambulance Bookings 131233

WAMBOIN FACILITIES AND CONTACTS

Wamboin Community Assn	Helen Montesin	President	6238-3208 wamboincommunity.asn.au
Bywong Community Assn	Nora Stewart	President	6230-3305 bywongcommunity.org.au
Fire Brigade	Andrew Dunn	Captain	0409-991-340 bh 6238 1849 ah
Wamboin Markets	Joan Mason	Contact	6238 3258
Sutton School Playgroup	Rosemary Semecky	Convener	6230-3807
Landcare	Roger Good	President	6236-9048
Community Nurse	Heather Morrison	Bungendore	6238-1333
Breastfeeding Assoc.	Belinda Dennis	Community Educator	6236 9979
Emergency Services	NSW Call Centre	Staff	132-500
Emergency Services Admin	Colin Brown	Controller	6238-1067
Justice of the Peace	Peter Greenwood	JP	6238-3358
Justice of the Peace	Keith France	JP	6238-3596
Justice of the Peace	Margaret Fletcher	JP	6238-1211
Justice of the Peace	Jill Sedaitis	JP	6236-9559
Justice of the Peace	Tony Holland	JP	6238-3762
Wamboin Scout Group	Peter Harrison	Contact Person	6238-3525
Wamboin Pony Club	Robyn Slater	Senior Instructor	6238-3472
Wamboin Play Group	Kristin Skinner	Convener	6238-1201
Hall Bookings	Joan Mason	Bookings	6238-3258
Church, Anglican	Robyn Robertson	Warden	6238-3202
Christian Prayer Group	Steve & Imelda Taylor	Contacts	6238-3220
KYB Bible Study Group	Yvonne Barrett	Contact	6230 3539 or 0409 951 388
Golf	Peter Greenwood	Golfer	6238-3358
Injured Wildlife	Wildcare	Helpline	6299-1966
Wonderful Women Of Wambn	Claire Ayling	Convener	6238-3347
Lake George Day VIEW Club	Lydia Zielinski	Contact	6230-3488
Wamboin Bookgroup	Alice Scott	Secretary	6238 3178

THE YOUNG WAMBOIN ENTREPRENEURS

Ashleigh Caird, babysitting	6238 0746.
Deanne Brucic, babysitting & petsitting	6238-1884
Jess, Ellen and Nicole Smith, petsitting (experienced with horses)	6238-3115
Fiona Skea, babysitting	6238-3290
Rebecca Purdie, petsitting	6238-3343
Gabrielle Simpkin, babysitting and petsitting	6238-1335
Elena Sutcliffe, petsitting	6238-3228
Jack and Matilda Whitney, pet care	6238 3059

OAKLEIGH BERRY FARM

Fresh Raspberries (weather permitting)
Raspberry Leathers, Raspberries in Vodka
Raspberry Jams, several combinations
Raspberry Syrup, Raspberry Vinegar
made on farm from our own fruit

We also sell **Dried Fruits, Nuts and Sweets**,
Available in both 1kg and 200-300g resealable packs.
Come and see us at the markets on April 17th.
Bargain prices and friendly service, what more could you want.

Alan and Eleanor
Ph. 62383224 Mob. 0429 434944
alan.rope@priam.com.au

Local Boys

also
Concreting
Trenching in Rock
Site Cuts
Carting of Fill
Bobcat & Truck
Ph/Fax 6238 3090
Mobil 0418 624 630
Rex Paton
49 Gallagher Crescent
Wamboin



THE LOCAL GRADER MAN
Rex - try 0418 624 630 or AH 6238 3090



Custom Security Services

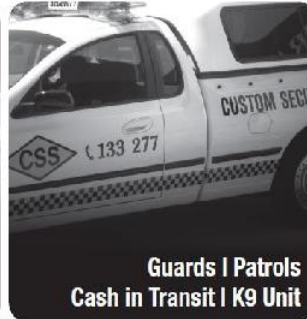
SAFEGUARDING YOU AND YOUR ASSETS



Monitored Security Alarm Services



CCTV Cameras



Guards | Patrols
Cash in Transit | K9 Unit

2 YEARS FREE!

Switch your alarm monitoring to CSS and receive up to 2 years monitoring FREE!

*Conditions apply

133 277

www.css.com.au

President's Paragraphs

At the AGM in March, after four years at the helm of the WCA, Helen Montesin stood down as president and I have now assumed the mantle. Under Helen's watch, the WCA has campaigned for increased recognition of the rural residential 'silent majority' in Palerang, and gained a considerable degree of respect within Palerang Council.

One of my aims as president of your association will be to continue this process of representing the interests of our community before the Palerang Council. I am, however, conscious of the fact that in my role **as president of the WCA, it is your views, not necessarily my own, that I need to present.** Your community association, however, can only act on your behalf if we know what is important to you.

From time to time we arrange for representatives from within our community, from Council or from other enterprises that have some involvement with our community (e.g. Police, RFS, Telstra), to address meetings on specific matters. More often WCA meetings are simply a forum for residents to offer their point of view or just catch up with what's happening within the community. **I would like to encourage all residents to make an effort to attend the occasional WCA meeting, or event** such as the monthly Produce Markets or the annual fireworks night, to just have a chat with the people who have volunteered to represent your interests to the wider community.

There are many **community and special interest groups active within Wamboin** and Bywong. The WCA endeavours to support all such groups through **The Whisper** and the **WCA Web site** (<http://wamboincommunity.asn.au>). If you are involved with a group that does not currently enjoy the support of the WCA, please contact either the editor of The Whisper (whisper@wamboincommunity.asn.au) or the WCA webmaster (webmaster@wamboincommunity.asn.au) and take it from there. If you're interested in the activities available within our region, please visit the Community Groups section of our Web site (<http://wamboincommunity.asn.au/communitygroups>).

Improved Mobile Phone Reception—Telstra has submitted a Development Application to erect a mobile phone tower on Millpost Hill. Several residents offer their views on this proposal elsewhere in this issue. The WCA is in the process of arranging a public meeting to allow Telstra representatives to meet with residents in an effort to arrive at the best outcome for the community as a whole. This meeting will be held in early April, and will be advertised on the community chalk boards, the WCA electronic noticeboard (see <http://wamboincommunity.asn.au/noticeboard>) and the WCA Web site (<http://wamboincommunity.asn.au>). The meeting is not a protest meeting—it is a meeting to help us to find the best solution to the communications problems in our area. By all means, come along and air your concerns, but please understand that we are trying to find a solution, not to beat up on Telstra.

Macs Reef Road Waste Transfer Station—The MRR WTS has been approved for inclusion in the 2010/11 Budget, but there is still a group within Council who are stubbornly opposed to this development. John van der Straaten offers his perspective elsewhere in this issue. (see also <http://wamboincommunity.asn.au/waste>)

Palerang Local Environmental Plan—The most talked about activity within Council since the creation of the Palerang LGA. John van der Straaten and I have been monitoring the development of the new LEP. Read how it might affect you elsewhere in this issue. (see also <http://wamboincommunity.asn.au/lep>)

Pete Harrison (president@wamboincommunity.asn.au)

BINGLEY CONTRACTORS

Ph: 0418 201784 or 0419 483 103
AH 62303 385

WATER DELIVERY

Prompt, reliable service of domestic water at competitive rates

ACTEW approved tankers
Local Carrier since 1994
1761 Sutton Road, Sutton

Property Management Services

Thinking of renting out your property? Take advantage of Sutton Real Estate's 18 years of experience. We have managed properties in this area longer than any other agency and we understand rural living. Compare our service:

- The lowest rates - we will not be beaten on management fees.
- Same day notice – If you're unhappy with our service you're free to discontinue.
 - Fully reference checked tenants.
- Comprehensive condition reports carried out including extensive photography .
- Four inspections per year to protect your asset with a copy of each report sent to you.
- Ongoing repairs and maintenance of your property by our qualified tradespersons.
- Management using "state of the art" Console property management software.
- Direct deposit of your rental income plus comprehensive monthly/yearly statements.
- Adherence to the code of practice of The Real Estate Institute of NSW.

Call Libbie, our fully qualified property manager, for your free, no obligation rental appraisal.
Phone 6238 0999 Bungendore or 6230 3240 Sutton.



picture framing

custom framing of your artwork
photographs and needlework

now available in wamboin

quality work • reasonable rates

obligation free quotes

phone lyn on 6238 3591

M JOHNSON

BUILDING SERVICES



now a WAMBOIN RESIDENT

PLAN DRAWING

GENERAL CARPENTRY

DECKS & PERGOLAS

EXTENSIONS

KITCHENS, BATHROOMS & LAUNDRY

0412 799 433

NSW LICENCE NO. 196061C



LAMBERTVINEYARDS

CAFÉ: Thursday, Friday, Saturday evenings Friday, Saturday, Sunday lunch

TAKEAWAY: Thursday and Friday evenings

CELLAR DOOR: 10am-5pm weekends and most public holidays Other times by appointment

810 Norton Road Wamboin NSW 2620 T (02) 6238 3866 F (02) 6238 3855 E

wine@lambertvineyards.com.au

Macs Reef Road Waste Transfer Station in Jeopardy – Council tells 3,700* Residents to Drive to Bungendore Instead!!

By Jim Greehead and Nora Stewart

Bywong, Wamboin and Sutton are facing the potential loss of the only tangible Council facility in the area, with the potential of finance not being made available in this year's General Management Plan.

In March, Palerang Council agreed (by one vote) to include in the 2010/11 budget, a Waste Transfer Station (WTS) on the current landfill site as recommended by the Working Party. The proposed waste transfer station is shown in the drawing overleaf.

Important information about costs

- The operational costs of the proposed WTS are comparable with those of the current landfill;
- Gate fees are being introduced Shire-wide. The gate fees from the Macs Reef Road WTS are expected to cover the capital cost of the WTS.

The WTS maintains the long-standing waste management facilities in the Wamboin/Bywong/Sutton East area and should have minimal cost impact on waste management costs in the Shire.

There is still opposition to Macs Reef Road WTS

Mr Bascombe (General Manager), Cr Raynolds (Mayor) and Crs Graham, Crozier and Marjason are vigorously opposed to the construction of the WTS. Their preference is to close the current landfill and use both the savings in operational cost and the gate fees paid by Wamboin/Bywong/Sutton East to minimise the general waste charge (GWS) increase for residents in the rest of the Shire.

In short, these individuals want the residents of Wamboin/Bywong/Sutton East to:

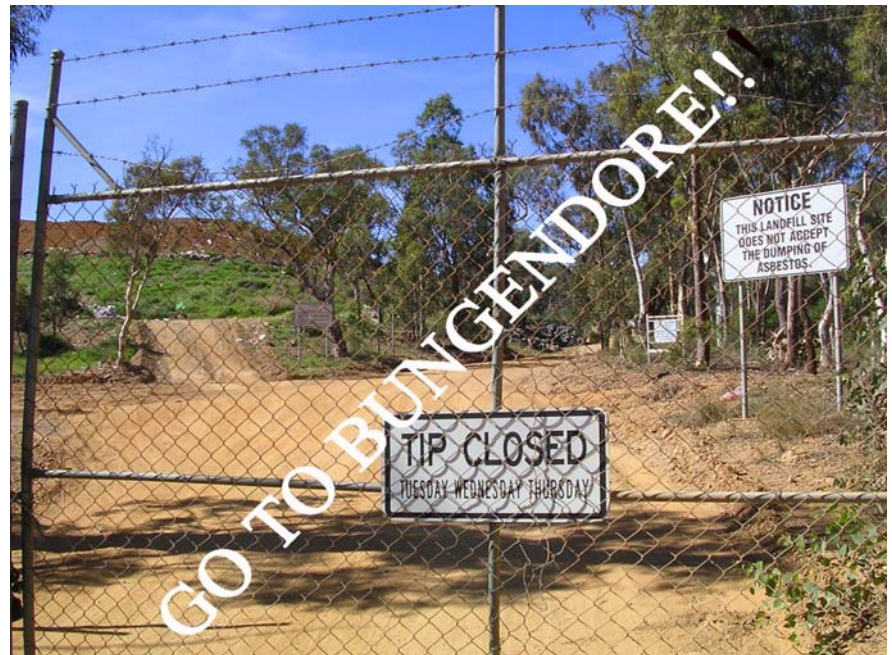
- **Pay \$256 per annum General Waste Charge (up \$18 from last year),**
- **Take all their waste to the Bungendore Waste Transfer Station, and**
- **Pay gate fees at Bungendore to dispose of the waste.**

It is estimated that the residents of the three communities contribute at least \$1.5-\$2m annually in rates to the Council.

What you can do?

Email your local Palerang Councillors to tell them **that they must keep their promise to build a new waste transfer station at the Macs Reef Road**

site.councillors@palerang.nsw.gov.au



For more detailed background information

<http://www.bywongcommunity.org.au/local-issues-to-council/waste-management>

*ABS Census 2006:population of 3673 for Sutton South, Bywong &Wamboin combined.

PUBLIC MEETING Tuesday 20th April, 7.30-9.30pm Bywong Hall

Interested in extending Bywong and Wamboin GREENWAYS?

Your public access to our beautiful bush

Help to extend the existing network and discuss how to develop the Greenways network further.

We would like to invite interested people to form a working group at the conclusion of the meeting.

For more detailed background information on Greenways including maps:

<http://www.bywongcommunity.org.au/about/bywong-greenways>

Another Bywong Car Boot Sale Gives Joy!

An almost perfect day greeted the early birds who ventured out for the sale last Sunday 29th March, and whilst the temperatures rose quickly, the mood was happy and calm.

With around 90 sellers and plenty of buyers, the event proved a big hit with all those who came. There was plenty of skilled and then deliriously riotous action from the K-9 Krusaders Flyball Dog team who came from Queanbeyan, with dogs excited to fever pitch. The Geary's Gap Pony Club riders gave a great display with quite a number of new riders in their group. It was good also to see a strong local presence for Wildcare, and Landcare had a good day selling most of their young native plants.

On behalf of the Bywong Community Association, I would like to thank everyone who attended. I would particularly like to recognise our very generous local businesses and individuals who contributed to our raffle – an important part of our fund-raising effort: Flames Fitness, Tender Edge Printing, Café D'Lish, Langley & Pino Eyecare, Koonaburra Wines, O'Sullivan's Waste, Southern Cross Computing, Lambert Vineyards, Tulip Top Gardens, Ellie Merriman (Ray White Bungendore), The Lake FM 88MHz (www.bywong.com.au) and Alpaca Magic.

Thanks to our very willing and able Wamboin Fire Brigade for excellent work at parking, collecting money, running the BBQ and giving useful information and demonstrations about all things fire, thank-you. Thanks also to all at the Geary's Gap Pony Club for their great work with the refreshments stall. Thank-you also to the many individual volunteers who gave their time to help distributing flyers, putting up signs, selling raffle tickets, making announcements, collecting and counting money, cleaning the reserve and the hall.

Biggest thanks are reserved for our hard-working organising committee – Bernie Greethead, Anne Goonan, Kerrie Gougeon and Pauline Chambers- the four Bywong musketeers!

PUBLIC INFORMATION NIGHT Tuesday 22nd June 7.30-9.30pm Bywong Hall, Why is the Macs Reef Road So DANGEROUS??

An **information night** to provide information and facts about road safety and improvement for **Macs Reef, Bungendore and Norton Roads**. Also, an opportunity for discussion with those who can influence change.

More information on this soon or contact the Association if you have a view or would like to help.

NEW LOOK WEBSITE – www.bywongcommunity.org.au

Have a look at our new look website – we hope you like it. If the writing is too small - go to top right corner and look at ACCESSABILITY to make text larger.

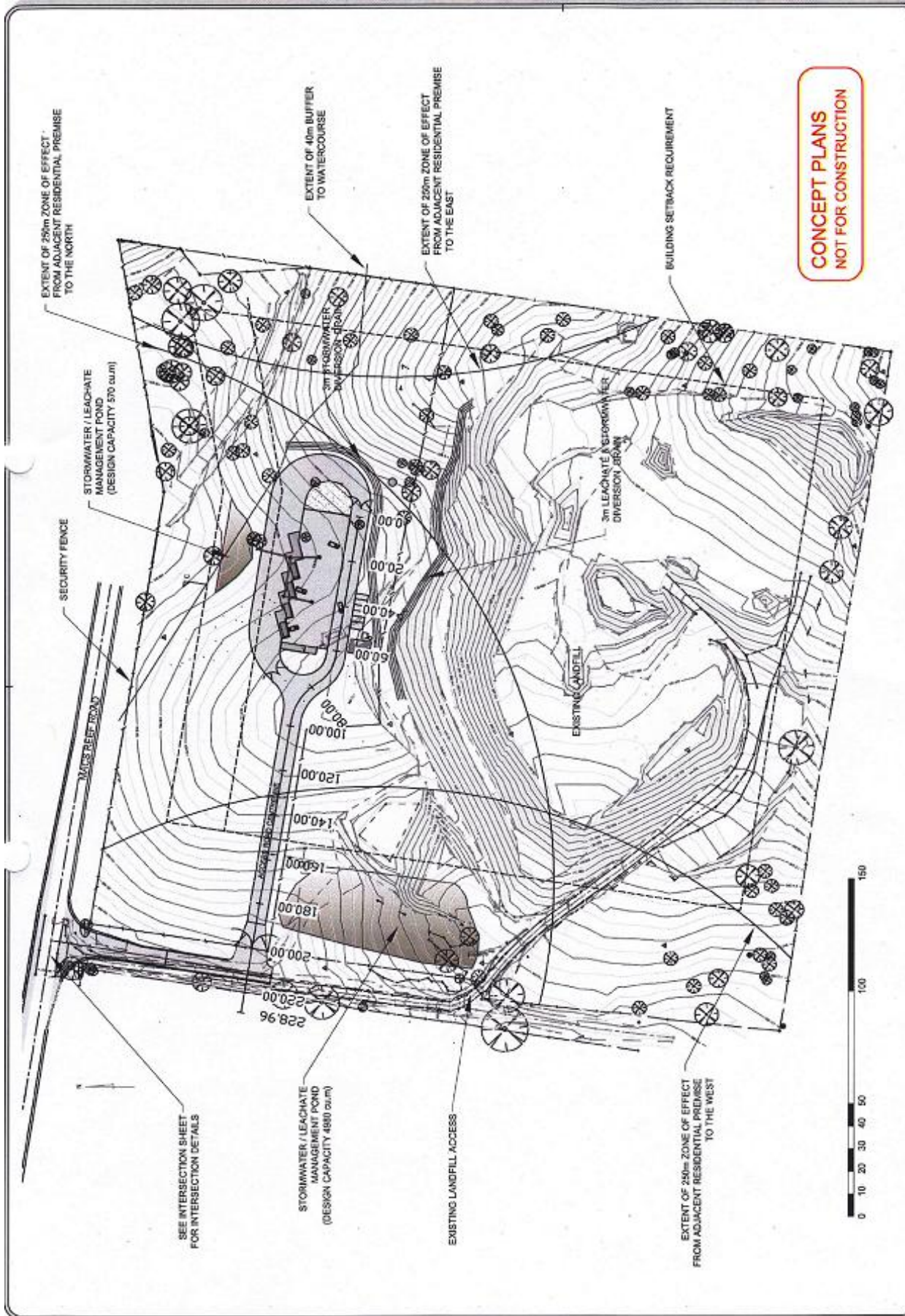
Highlights include:

- [Local NEWS](#) – please send items you think would make interesting local news....
- A new [Bywong MAP](#) - thanks to Paul Brugman
- [Greenways maps](#) – existing Greenways, and a larger comprehensive map with Crown roads as possible Greenways
- Deanes Buses information for [school buses](#)
- [Issues to council](#) – information the Association has put forward to council - the LEP, waste management, road safety, etc.
- [Bywong Hall booking info](#)
- Lots of information about the [Association](#), including meeting times and past minutes.
- [Bywong landscape slideshow...\(!\)](#)

I would like to thank David Hunter for his excellent assistance in teaching a luddite how to make a new web content management system.

Nora Stewart
President on behalf of the Bywong Community Association
president@bywongcommunity.org.au
www.bywongcommunity.org.au

Proposed Waste Transfer Station for Macs Reef Road - Drawing



Sheet 1 of 4

MACS REEF WASTE TRANSFER STATION CONCEPT PLANS CONCEPT 3 - SITE PLAN

Issue Date: 20/10/2010
 Plan Issue: FINAL

Copyright in these drawings & the site information provided by them is the property of Quadro Australia & may only be used or reproduced in whole or in part without the written consent of Quadro Australia.

Issue: 1/10/10
 Sheet Size: A3
 Project Reference: 105211
 Drawn: MS
 Approved for Issue: M. Skirvin

Phone: 02 4682 1061
 Email: office@quadro.com.au
 Fax: 02 4682 1001

Quadro
 Australia Pty Ltd

TIP OPENING HOURS

(from www.palerang.nsw.gov.au on 1-Dec-2009)

Bungendore Tip

Friday to Monday, 7.30 am - 5.00 pm
(please note the tip is closed Tuesday, Wednesday, Thursday)
During daylight saving, Friday and Monday,
7.30 am - 5.00 pm
Saturday and Sunday, 7.30 am - 7.00 pm

Macs Reef Road Tip

Friday to Monday, 7.30 am - 5.00 pm
(please note the tip is closed Tuesday, Wednesday, Thursday)
During daylight saving, Friday and Monday,
7.30 am - 5.00 pm
Saturday and Sunday, 7.30 am - 7.00 pm

BRADYS COUNTRYWIDE

Marketing the finest homes in the country'

Looking for real estate agency run by local people?

The expert in rural sales

John Brady
0422 132 240



The expert in rural rentals

Nicola Brady
6238 1600

Look no further, call Brady's Countrywide on 6238 1600 today!

www.bradyscountrywide.com.au



Fully licensed
Ideal for special occasions
and functions

Cooking School
Food & Wine
Tours to France

02 6238 0662
40 Malbon St
(the road to the coast)
Bungendore NSW 2621



Traditional French Cuisine

Chef Christophe Gregoire
www.letresbon.com.au

TAYLOR MADE PUMPS YOUR PUMPS NOT PUMPING? PUMP REPAIRS TO ALL MAKES OF PUMPS



- New Pumps Supplied and Installed
- Home Pressure Systems
- Bore and Irrigation Pumps
- Bore, pump and power packages
- Water, Bore Drilling Rig in local area - on site surveys
- Fire Fighting Pumps - Sales and Repairs
- Windmill Service, Repairs and New Sales
- Water Softener Repairs and Water Quality Analysis
- Premium Quality Water Softener Salt at Rural Prices



Don't run out of water - call a Local Bloke for mobile Sales & Repairs

Mark Taylor ALL HOURS

0428 486 460 (Mobile) 6238 2357 (Home) 6238 2351 (Fax)

Plants For Dams and Other Wetlands – What They Are and What They Do

by Gay McNeill

The next meeting of Sutton Landcare will be held on Tuesday 13 April in the Sutton School library. The meeting will commence at 7.30 pm with the AGM. At 8.00pm our speaker, Alison Elvin, will address us on plants for dams and other wetlands. Alison has a degree in Environmental Science and runs her own environmental consulting and seed collecting business. She is a noted expert on wetland plant ecology issues. Alison has worked with wetland and riparian rehabilitation for many years, and enjoys sharing her knowledge.

Come along to learn how you can identify many of the common species of water plants growing in and around your waterways, and about the wonderful functions each species performs in your landscape.

The evening will be followed by a field trip to local farms the following Saturday morning April 17. Alison will then identify and explain to us the plants currently growing in the dams, and plants which could be added to improve water quality and biodiversity outcomes.

Further details can be obtained from the secretary Gay McNeill phone 6230 3569 or the President David Vincent phone 6230 3584.

Hall Doors

Users of the Hall will notice the old warped doors to the playground have been replaced. This was not by the wave of a magic wand but more because of a clatter of clogs. I will explain. The old doors were warped and weathered beyond repair. After deciding to replace them with 2 standard doors Hank Berlee and I found that the doorway was far from standard. Our answer was to manufacture doors to fit. On day 2 Hank also found out the door jambes were not secure. This resulted in movement between measurement and fitting. Not to be beaten Hank pressed on with fix after fix and after day 3 we now have a pair of doors that open, and close, easily from the Hall to the playground. Thanks Hank for a tricky job well done. -- Lofty Mason.

**Bungendore
ELECTRICAL
Contactors**

Bruce Stewart

E. bruce@brucestewart.com.au
M. 0418 295 864
P. 6238 0544

**Domestic, Commercial,
Industrial and Rural**

**Installation, Maintenance,
and Repairs**

Data and Voice Cabling

Lic NSW. 198019C
Lic ACT. 200695
Cabler. A024840

Looking for a great horse vet?



- **We just love horses:** All of our team lives, breathes, eats and sleeps horses and are horse owners too. It means we care for your horses like they are our own.
- **Around the clock care:** We know that just like people, horses don't just need accident or emergency care during business hours, so we are available anytime...Just call!
- **We Travel to you:** If your horse is incapacitated or you don't have transport we'll come to you or help you arrange transport to our dedicated equine hospital.
- **If Hospitalisation is needed:** Our state of the art hospital means that your horse will get great care under the supervision of our dedicated team of Vets and Nurses ...Fast!
- **From the routine to the complex diagnosis and surgery - we do the lot:** Our vets have advanced training in equine dentistry, lameness, reproduction and surgery - and a whole lot more in between.

Corner of Barton and Federal Highways, Lyneham

Email: equine@canberraequinehospital.com.au Website: www.canberraequinehospital.com.au

Phone: (02) 6241-8888



Wanted Properties for Sale

Hi, my name is JAN LADMORE. I am the Area Sales Manager for Horizon Real Estate at Bungendore and I reside in Wamboin.



I have recently sold these properties in your area and achieved a very good price for them.

My Vendors are more than happy with the result & the professional manner in which their properties were Listed and Sold.

If you would like a free, no obligation, no hassle appraisal , plus some helpful advice on how to market & achieve the best possible price then please do not hesitate to contact me.

I'm keen to help you **Sell your Property!**



- I'm happy to hold "Open for Inspections"
- Advertising on All homes, Real Estate.com. Domain & Horizon Internet Sites ..at no cost to you.
- We can also organize Auctions and Tenders

Jan Ladmore

Ph: **0407 890 527** 7 Days

E-mail: jan.ladmore@bigpond.com

Nature Notes – March 2010

Jo Walker

A little more rain at the beginning of the month has kept the landscape green and the grass growing. Most noticeable is the Redleg Grass growing along many of the local roadsides at present, the tall reddish stems topped with elongated dark seed-heads.

The ground is still damp enough to support the growth of quite a few different fungi. This year, I haven't seen the large brown fungi that often emerge from the ground near eucalypt trees, but several sizeable ones came up at a friend's place on Cooper Road. This fungus, *Phlebopus marginatus*, is one of the largest Australian fungi, the flattish brown caps often growing to almost a metre across, supported by wide, robust stems. They are in the group of fleshy-spore fungi – the underside of the cap consists of dense spongy material rather than the gills more commonly seen on toadstools.

Last month, I mentioned some small green parrots, seen at a distance, and made a guess that they might have been Swift Parrots. Denise Hales contacted me and said they'd been at her place and looked like Rainbow Lorikeets, not a bird I thought we'd ever see in Wamboin. Later, a small flock of the birds visited one of the still-flowering stringybark trees on my place, but moved on before I could get a good look at them. Denise rang several times, while I was elsewhere, to say they were still turning up at her place. Finally, we synchronised our activities, and I left my dinner one evening to hurry up the road to view the elusive birds. They sat in one of Denise's trees at only a few metres distance, lit up by the setting sun. And, yes! They were Rainbow Lorikeets! They are still in the area, but the flowers of the Red Stringybarks (*Eucalyptus macrorhyncha*) are past their main flush, so these attractive little birds will probably soon move on. A few Dusky Wood-swallows have been flying around over the last few weeks too, probably migrating through the area to a warmer place for winter.

Last year, at about this time, I found two tiny Horned Midge Orchids (*Corunastylis cornuta*) on my place. Although they are less than 10 cm tall and very well camouflaged, I managed to find the group again recently, only this time there were four tiny flower stems. The six or seven minute flowers are yellowish green and maroon with the dorsal sepal turned back to resemble a pair of horns. A surprise orchid find was a group of five tall Greenhood Orchids growing up through a *Joycea pallida* (Red-anther Wallaby Grass) tussock. They appeared to be *Diplodium decurvum*, but these are supposed to prefer moister sites than the north-facing dry slope on which they were growing.

There are quite a few Wood White butterflies (*Delias aganippe*) flying around at the moment. There were four inspecting a Cherry Ballart (*Exocarpos cupressiformis*) tree near the house this morning, probably looking for a place to lay their eggs – their larvae feed on this plant, but also on several species of mistletoes. There are also some Small Grass Yellows (*Eurema smilax*) flitting about near the Sennas, their preferred larval food-plant.

Although we're already through the first month of autumn, there is still a lot of activity around the place – and, yesterday, the earliest of the new season's kangaroo joeys peeped out of its mother's pouch and had its first look at the world.



RIDING INSTRUCTION ACCREDITED EFA LEVEL 1

Local riding instructor available for beginners and more

experienced riders. I will come to your property, or have sand arena available. Improve your dressage, jumping or just increase your confidence. Available weekends or weekdays.

TEACHING IN WAMBOIN FOR OVER 10 YEARS
Phone Leanne on 6238-3435



Painters & Decorators

Aurora

Your Local Master Painter- Stephen Hopkins

Free Quotes

References available on request

Member of Master Painters

Qualified City & Guilds Tradesman



Ph: 6259 6351

Mob: 0418 975 232

BUNGENDORE LANDSCAPE SUPPLIES FOR ALL YOUR LANDSCAPING NEEDS



Firewood
Feature rocks and riverstone
Decomposed granite (yellow)
Ironbark strainers and poles
Old Railway Sleepers, Wine Barrels, Pavers

Sand, Gravel, Mulch, Topsoil, Veg-Mix
Mushroom compost, Bobcat
Excavator and Roller
Certified weighbridge, Cement
Hardwood sleepers – Stakes – Pegs

Ph 6238 0460 Open 7 Days
36 King Street Bungendore

WAMBOIN HOME PRODUCE MARKETS

The March Home Produce Markets were one of our largest for local produce to date. Potatoes, rhubarb, cucumbers, cantaloupes, olives, raspberries, celery, grapes, tomatoes, chooks, honey and whatever complimented the home cooked bread, sausage rolls, cakes and biscuits. The Holland family kept up their sterling effort running the Brunch stall with the freshly cooked bacon and egg rolls. Despite one blockage the Wagonga coffee stall battled through the line-up of customers. All stallholders are locals. These Markets are held at the Hall in Bingley Way on the third Saturday of the month. The Markets run from 9am to noon. Local garden produce sells out quite quickly so you need to come early to get your pick of the best. The markets are a great place to socialise. Try 'The Olde Coffee Shoppe' for coffee of your choice. Tasty jam and cream scones are on sale.

A special thanks to all who help to pack up after the markets, many hands make light work! For more information contact Joan Mason 6238 3258 Entry is free to customers. - Stall holders \$5. So mark your diary:

SATURDAY 17th April 2010
9AM – 12 Noon

A Long Walk for Charity

by Nicole Vlahovich Mitchell

On the last weekend in August our team of four- 2 Blondes, a Doc and a Ginger- will walk 100km, participating in the Oxfam TRAILWALKER. Myself, Nicole (a Doc), my husband Greg (a Ginger), both residents of Bywong, Greg's sister Amy and our friend Stacey (2 Blondes) have started training and fundraising already. Oxfam TRAILWALKER is the world's greatest team challenge! And it's also one of the toughest. The challenge is to complete 100kms of rugged bush trail in less than 48 hours as a team of four. Teams must start together, stick together and finish together. And it's not just physically demanding - Oxfam TRAILWALKER is also a fundraising challenge. We have committed to raising at least \$5500 to help some of the world's poorest people.

So should you see us walking in the area, particularly on Norton or Bungendore Roads, as we walk the 30 km from our door to Amy's house in Queanbeyan, give us a toot or a wave. Alternatively, you could also support us by sponsoring our team and/or following our training on our team page <http://www2.oxfam.org.au/trailwalker/Sydney/team/42>

D & K
CONCRETING
0410 021 097

- driveways
- footpaths
- garages
- house slabs
- footings
- spray on
- stencil

Reliable, friendly service

Woodbridge Plumbing Services

Lic NSW 148394C and ACT 199815827

- * Plumbing – Drainage – Gas Fitting (L.P.G / Natural Gas)
- * Maintenance for the above
- * New Homes – Extensions – Renovations
- * Gutters and Downpipes
- * Water filters (under sink or whole house)
- * Blocked Drains
- * Hydronic heating (Radiators)

We assure you of our best attention and service at all times

Please call Matt on 0428 489 399 – Fax 6282 0621

NEW CLASSIFIEDS

For sale at \$5.00 per ring bound folder. A pristine collection of *Gardening Australia* magazines from the 1990s onwards. Each folder contains 12 magazines packed full of information that is still very relevant today. There are also catalogues and information on worm farming and chook care. Call Penny Evans 6238 3447.

Jane Myers, MSc (Equine Studies), educator and author of the book **Managing Horses on Small Properties**, will deliver two free evening seminars, in April each covering: pasture improvement, grazing management, property design and horse facilities, water protection, conservation and supply, manure management, trees and plants, and horse health and behaviour. For details check www.equiculture.com.au.

CLEANING FREAK!?!? I need somebody during August 2010 mainly with possible longer employment. Come and join me! Learn how to use chemical free cleaning products, sweat it out, tighten your abs, thighs and rear muscles by using microfiber technology -- and be paid at the same time! If you think you may be suitable call KerriKleen on 0401-547-290.

LONG RUNNING CLASSIFIEDS

Mobile Natural Horse Care and Gardening - Not enough hrs in the day / week? Away on weekends or holidays? Need someone to feed, rug, groom, clean up and care for your horse/s? General gardening, weed, mow, mulch and tidy. Other pets included and mail collected. Unable to ask neighbours / friends again? Call Cheryl - on 62369373 or 0402201491

South Durras holiday house - 3 bedrooms, 2 bathrooms, double carport, close to shop and 5 minute walk to beaches. Dog friendly, fully enclosed yard. Available now. Please phone Karen on 0428 148 500 for further information.

FIREWOOD. Mixed hardwood. You load 6 X 4 box trailer \$100. 6 X 4 box trailer delivered \$130. Larger loads delivered by arrangement. Saturdays and Sundays only. Ph 62383164.

Convert those precious memories from VHS or VHSC Video to DVD, Records and Cassette Tapes to CD, right here in Wamboin. Act now before they are lost forever. Fast turnaround. Only \$12 per Video and from \$12 per Record or Cassette. Phone Vicky or Tony Holland 62383907 or 0403 069018.

MATHS & SCIENCE TUTORING, K-6, 7-10 and 11 & 12, & 1st year university. Encouraging, expert coaching. Judy Shellard BSc(Hons), Dip Ed, David Shellard (3rd year Mathematics ANU). Please contact Judy. Phone 6238 3050

WCA Electronic Noticeboard – Residents are continuing to subscribe to the noticeboard. It is a great way to keep up with issues of community interest and I encourage everybody to subscribe. To subscribe, simply send an email message (doesn't need any subject or content) to Wamboin_Noticeboard-subscribe@yahoo.com.au.

CHOOKS WANTED – Any age & roosters. Phone Frank on 6297-3523 to arrange collection.

Beekeeping Services, Beeswax & Local Award Winning Honey. Prompt removal of swarm bees and hives that are no longer wanted. We can also remove feral hives depending on location. Fee charged depending on distance travelled and the type of job required. Pure bees wax candles, beeswax blocks and award winning local honey for sale; available bottled or in bulk. Phone or see us each month at the markets! Call John or Tricia - Ridgiedidge Apiary 6238 3791. www.ridgiedidge.net.au

Large Holiday house situated in Tuross, 180 degree Ocean views, opposite shops, 2 minute walk to beach, large block for parking, available now. Discounts apply for Wamboin/Bywong residents. Please phone Cherrie 0418 621 462 for details.

ADVERTISING RATES: Local classified advertisements are free, as are announcements from community organisations and clubs. Business advertisements pay printing and Community Association Projects. Contact editor on 6238-3484 for information. Advertising rates: Full Page - \$120 Half Pg - \$60 1/3 Pg \$40 1/4 Pg - \$30 1/6 Pg - \$25 1/8 Pg - \$20

FOR HIRE from the Wamboin Community Association: GAS BBQ - Party Size, Portable, \$30 (includes gas) together with \$30 cleaning bond, both payable on collection. Cleaning bond will be refunded if BBQ is returned clean. Enquiries - Joan Mason 6238 3258.

Trestles and chairs are available for hire by local residents. Hire rates are: Trestle \$10ea and chairs \$1.50 ea. Price does not include delivery or pick-up charges. Available from the Wamboin Community Hall, 112 Bingley Way. Must be returned in clean servicable condition. All damages are responsibility of the hirer. Equipment must be tied securely on trailer etc. when taken (otherwise they don't go.) Time of pick-up and returned MUST be adhered to (I don't live at the Hall!) - Joan Mason, 62383258.

FOR HIRE: WAMBOIN COMMUNITY HALL. Bookings arranged by Joan Mason 6238 3258. Local Residents \$100, Bond \$250. Non-Resident \$150, Bond \$300. The Hall is not available for teenage, 18 or 21st. functions.

FOR HIRE: BYWONG COMMUNITY HALL. Suitable for smaller functions and seminars, groups etc. Check availability and booking information on www.bywongcommunity.org.au.

The Whisper is a community newspaper for Wamboin and Bywong. If you live in the area and have something to say about living here that is informative, thoughtful or entertaining, think about writing it up for the next issue. For more information contact the editor on 6238-3484 or email nednoel@optusnet.com.au

Considering the Implications of LEP Zoning

At Cr Goonan's prompting, we have set up a couple of pages on the WCA Web site to help residents understand the implications of the proposed rezoning of land within the Palerang LGA. Note that the Department of Local Government (DLG) has changed the zoning definitions used throughout NSW, so *all* land is being rezoned—this is not just an exercise in protecting land or making more land available for development. Further, the new Zone definitions provide a considerable degree of flexibility in how they can be 'customised' by individual councils. With the exception of a few fundamental requirements imposed by the DLG, it is possible for individual land use Zones to be defined and applied quite differently by different Councils.

What is important at this stage of the LEP deliberations is that we have an appropriate range of land use Zones within Palerang, and that the different land use Zone definitions that are incorporated into our LEP reflect as closely as possible current, or at least currently desirable land use practices.

There are both positive and negative aspects of the flexibility available to Councils in defining individual land use zones. One very good example is the current inclusion of "electricity generating works" as a permissible land use (with consent) within the E4 Environmental Living Zone proposed for much of Wamboin and Bywong. As it stands, a wind farm would thus be a permissible land use. Following representations from concerned residents, this item will probably be removed from the list of permissible land uses when the matter comes before Council. This would, however, then prohibit the use of backyard wind generators or ground-mounted photo-voltaics. If we want these latter forms of electricity generation to be allowed, we must find an alternative land use definition that would be deemed to embrace these items. This is the sort of issue we are facing with each land use Zone definition.

Another issue is that of the scenic amenity of our local environment. The different Zone definitions, which it should again be emphasised can be customised to quite a large degree by Council as it prepares the LEP, place different emphasis on this aspect of land use.

Residents who are interested in the land use zoning implications of the LEP are encouraged to visit the WCA Web site at <http://wamboincommunity.asn.au/lep>, and also to look through the discussion paper prepared by the Burra-Urila Residents' and Ratepayers' Association (<http://www.burra.org.au/issues/LEP.htm>). - Pete Harrison



Pumps and Rural Maintenance

*Specialising in
pump
installation,
repair and sales*
ABN 28 980 965
960

Rhett Cox
Mobile: 0411 140 584
Phone/Fax: (02) 6230
3387
Email:
rhettro@bigpond.com

Supplying Quality Lucerne & Pasture Hay Good
Range of Bagged Feed and Chaff
Steel Cattle and Horse Yard Panels Stock and
General Transport Open 7 Days Locally Owned

Steve Hughes
Ph 62380900 0408 481 664
32 King Street
Bungendore

How Clean Is Your Water?



- Town & Country
- Domestic & Commercial
- We Clean All Types of Water with Minimal Water Loss

...That's Our Speciality!

For Your **FREE** Appraisal on Your Town, Tank or Bore Water
Call Nic or Melissa Clancy: **4845 8235** or **1300 364 858**
"A locally owned business that guarantees their work"

www.pristinewater.net.au



Geary's Gap/Wamboin Landcare

Think global, act local

Nursery sessions are usually held on the first Saturday of each month at the nursery (at Geoff Butler's place), **9am – 11am**. However, the next session has been shifted to the second Saturday of April. So the next two sessions will be on **10 April and 1 May**. Please bring along some cuttings of local native plants, so that we can strike some new plants.

Please contact Geoff beforehand if you are going to attend - email gbu22182@bigpond.net.au or phone 62369158, so that Geoff can cater for the correct number of people in terms of seating, plant/potting mix preparation and morning tea. Anyone is welcome to come and help, and no expertise is needed.

Bywong Car Boot Sale: We had a great day and sold nearly all our stock. We sold all the plants at the bargain price of \$2, and near the end of the morning we dropped the price of eucalypts and wattles to 50c and heaps of people jumped at this opportunity! Thank you to everyone who helped on the day, and to all those who helped over the previous month by preparing the plants for sale.

Next Plant Sale: Saturday 16 April at the Wamboin Market, 9am -12 noon. All plants cost \$3 and will grow in this area.

Membership is free. Activities are notified to members via email and also advertised in the Whisper. If you wish to be added to the email list, send a message to the secretary, Chris Fowler, chrisft@spitfire.com.au. **Planting tip:** It's time to start planting! The rain was fantastic, and made digging holes much easier than it was during the drought. Planting in autumn is particularly good, as it gives the plants a bit of growing time before the really cold weather hits, and plenty of time to get established before next summer's heat. Make sure young plants are surrounded by a bowl deep enough to pour a bucket of water into, and water once a week for the first few weeks.

-- Kathy Handel, ph 6238 3596, email: kukinya@bigpond.com

QUALITY STONEMWORK AND LANDSCAPING

Retaining Walls Paving Turfing
Irrigation Systems Water Features

**View Various Styles of Stonework &
Speak With Many Satisfied Customers
Free Quotes & Design**

PHONE: DAVE ARGÆT
6238 3460 (HOME) 0421 657 952 (MOBILE)

 **DICKSON LEGAL**
INCORPORATING TREVOR BARKER & ASSOCIATES

General law practice -
Canberra & NSW

*Three generations of service to Canberra
and the surrounding regions.*



PRINCIPAL SOLICITOR - TREVOR BARKER

PH: 02 6248 8085

Second Floor, Dickson Chambers, Dickson Place
Dickson ACT 2602

Rainfall and Temperatures in Wamboin – 35 Year Statistics from the Robertsons.

March Rainfall to 28/3 ... 42.75mm
2010 rainfall to 28/3... 219mm
Average April rainfall ... 46.2mm
Wettest April ... 174.5mm in 1989
Driest April ... 0.5mm in 1997
Coldest April day ... 8 degrees C on 27/4/09

March 2009 ... 10.75mm
2009 to 28/3 ... 86mm
April 200 ... 64.75mm
Wettest April day ... 42.0mm on 13/4/94 & 5/4/99
Hottest April day ... 28 degrees C on 3/4/86
Coldest April night ... 0 degrees C on 27/4/99 & 23/4/06

My Leaking Dam Story

For 22 years we have been annoyed by the water loss from the dam at the front of our house. It has consistently leaked at a rate that I would estimate at two 19mil hoses running. I have had 2 tries at mechanical repair and have also thrown in several bags of Bentonite without making any difference. After the last rains I asked Google about leaking dams and came up with 'Polymer Innovations' who market a dam repair powder. With much trepidation I ordered 20 Kilos of their product. 'Here goes nothing and not much change from \$400'. Now picture if you will; Trent Abell rowing me around our dam in Dave Argæt's tinny while I broadcast the strange powder (some of which turned to a greasy sort of jelly when wet) at a rate of 100 grams per square metre. We worked along and away from the dam wall. For a couple of days I was too apprehensive to check the outflow.

Very pleased to report that after 2 days the flow had reduced to a mere trickle and dried up completely after 5 days. Yes, there is still a slight seepage area below the dam wall, which I believe comes under ground from the deepest (untreated) section of the dam. I intend to try again in that area if it doesn't take up. Now I can't say this treatment will work for your dam however, I am very happy with our result. No, I am not on a commission. -- Lofty Mason.



for all your electrical and air-conditioning needs

Call Mitch on **0408211516**

rodgerselectrical@bigpond.com



- ★ Mini-excavation
- ★ Wood splitting
- ★ Mulching & wood chipping
- ★ Home maintenance
- ★ Handyman services

Charlie Montesin
(NSW Lic: 166627C)
Phone: (02) 6238 3208
Mobile: 0409 224 901
Fax: (02) 6238 3165



The Wamboin Firefighter

A newsletter from YOUR volunteer rural fire brigade compiled
by the Executive Committee, with help from many members of the Brigade

BUSHFIRE DANGER PERIOD HAS ENDED

A FIRE PERMIT IS NOT REQUIRED FOR ANY BURNING OFF IN THE OPEN. HOWEVER, IF YOU NEED TO LIGHT A FIRE IN THE OPEN PLEASE NOTIFY YOUR NEIGHBOURS AND THE BRIGADE CAPTAIN AT LEAST 24 HOURS BEFORE YOU LIGHT THE FIRE.

MANAGEMENT, INCLUDING CONTAINMENT OF A FIRE ORIGINATING ON YOUR PROPERTY IS YOUR RESPONSIBILITY.

RING TRIPLE ZERO (000) TO REPORT FIRES OR SMOKE SIGHTINGS.

BRIGADE ACTIVITY DURING THE PERIOD

Again, thankfully it has been a very quiet month with no fires or motor vehicle accidents in our area. As noted above, the bushfire danger period (Oct – March) has ended but bear in mind that in just 6 months from now the fire danger period will again be upon us. While the heat in the ‘bushfire’ kitchen has reduced momentarily now is the time to plan for and action your maintenance regime. What improvements can you make on your last season’s preparations?

BUSH FIRE PLANNING

It’s time, to start planning your bush fire protection projects for the winter. Some suggestions include:

- remove dead branches, leaves and undergrowth from around your home and other structures e.g. shed;
- prune any tree limbs less than two metres from the ground or overhanging your home;
- remove bark, heavy mulch, wood piles and other flammable materials close to the home or other structure;
- ensure you have an adequate and independent water supply (i.e. bore, rain water tank, dam etc);
- keep gutters clean;
- depending on decisions you make as part of your Bush Fire Survival Plan, ensure you have equipment to fight fires (a petrol/ diesel powered pump, long hoses with nozzles, buckets, bins, sprinklers);
- prepare your Bush Fire Survival Plan.

WINTER PLANNING

Speaking of kitchens, isn’t this autumn superb – sunny days and cool nights. And when the days and nights have cooled a tad more (typically 25 April) we are gathering a good sense of the approaching the winter season. Bingo, out come the warm clothes; on go the heaters (wood, electric, gas); the must have potato chips become a popular feature spitting away on the stove; electric blankets on the beds, radiators in the study, and so on.

The ‘Off’ Season?

As we enter the BUSH FIRE ‘off’ season it is worth considering some statistics. Over the last 5 years the Brigade has attended 67 fires. Of these 67 fires 39 of them occurred in the period 1 April to 30 September. So 58% of fires that the Brigade attended in the last 5 years occurred in the ‘off’ season.

In winter, where do fires start?

- the most fire-prone areas in the home are the kitchen and the bedroom;
- 40 per cent of house fires start in the kitchen;
- 15 per cent start in the bedroom;
- one in four fires is caused by unattended cooking;

- other causes include electrical faults, combustibles too close to heating sources, children left unattended in the kitchen, poor maintenance and smoking.



A house fire on Bungendore Road in 2007



A HANDY WINTER FIRE CHECKLIST:

- install internal smoke alarms;
- replace the battery in alarms already fitted (1 April);
- have a home escape plan and an evacuation point that all the family knows;
- never leave cooking unattended;
- place a screen in front of an open fire;
- check your chimneys and flues for build-up and blockages. These should be cleaned annually and be completed before you light your first fire;
- check electric blankets for any damaged or frayed cord and general wear and tear;
- keep portable heaters away from curtains and bedding;
- clean the lint filter of your clothes dryer regularly;
- use only one appliance per power point;
- have a fire extinguisher and a fire blanket located in the kitchen near the exit. Know how to use them, and know their limitations;
- examine and service oil and gas heaters regularly to ensure safe and efficient operation;
- have a house escape plan;
- switch off or reduce the heat from heating devices while sleeping.

THAT 'PROPERTY FIRE ASSESSMENT QUESTIONNAIRE'

In the February edition of the 'Whisper' the Brigade requested residents to complete a Rural Fire Service Property Fire Assessment questionnaire for their property. Doing so was, and remains, voluntary and the response to date has been about 10%. The intention behind the questionnaire is for the Brigade to be better prepared and informed if / when it should have to attend YOUR property. Remember, none of us expects to have to call on the emergency services, but it happens all the same – to people just like you and me.

We appreciated that the layout of the questionnaire is not the easiest and the style may not be familiar to many people so we included some brief explanatory notes to assist. Some residents have also consulted one of the contact officers listed on the back of the advice notes. This has clarified some personal questions and enabled them to complete the questionnaire. In some cases, we have visited them at home to discuss issues on site. The opportunity to take this approach remains open if you want to use it.

The Brigade also has a regular presence at the monthly Wamboin Home Produce Markets. To further assist the community, at the April markets the Brigade will have suitable people available to help with the completion of the questionnaire. Please remember that it is only necessary to complete those sections appropriate to you, and that may be easier than you think.

If you did not receive a questionnaire and self-addressed envelope please contact Richard Hobbs (6238 3505) who will arrange for a copy to be delivered to you. Please, give us the opportunity to help you and our community.

UPCOMING EVENTS

- April - we will be looking for willing helpers to assist members, family and friends in this year's grape pick in Wamboin. Helping with the harvest is a key fundraiser for the brigade. Timing of the pick varies a little each year but typically it's late March and April. If you are not a member of the brigade and can spare a morning or two on a weekend and would like to help out, please contact Ian Coillet at lodestar@ozemail.com.au or ph 6238 3425.

FURTHER INFORMATION

The Wamboin Brigade website

The Brigade's website will enable you to monitor local conditions as well as brigade announcements. The Community Information section has particularly useful information and links to other websites that provide guidance regarding bush fire preparations. <http://brigade.wamboincommunity.asn.au>

Brigade Information Stall at the monthly Wamboin Home Produce Market

The Wamboin Fire Station and 'Shop Front' is open on Wamboin Home Produce Market days (3rd Saturday in the month). Brigade members are happy to listen and offer advice to residents pertinent to their particular situation. If you would like your fire plan reviewed then please bring it along.

Finally, if you have any queries, please contact the Brigade's Captain (Andrew Dunn) on 0409 991 340 or (02) 6238 1849 (ah).

PREPARE. ACT. SURVIVE.

How The Whisper Gets From the Printer To Your Mailbox

The 50 people below each spend time each month to make sure that Wamboin and Bywong residents own and receive a free community newspaper. Last month they If your deliverer has been on the job for a long time and you have a bit of time you could spare, think about offering to take over the job. If you already have too many tasks in your month, every now and then give your volunteer paperwoman/man/boy/girl a thank you. - Editor

160 CO-ORDINATED HELEN MONTESIN: Ph 6238 3208

Dene Evans	Nrtn Area frm Campbl West	20	Bill Owen	Cooper Rd.	26
Helen Montesin	Fernloff Rd	33	Stuart Whitten	Canning Close	17
Hank Berlee	11 Poppet Rd (for all on road)	34	Alan Rope	Sutton Road	30

273 CO-ORDINATED BY SUE GANE: Ph 6238 3463

Joan Mason	Bingley Way	45	Margaret Heleimin	Merino Vale Drive	17
Sue Ward	Norton, Bngly to Weeroona	32	Anne Gardner	Weeroona, Norton to Majors	31
Sue Gane	Majors Close	20	David Anderson	Weerona, Majors to Denley	35
Ned Noel	13PlrngCncl+37Advertisers/Misc	50	Penny Evans	Norton, Cmpbell to Bngley	24
Kathy Handel	Yalana West	19			

228 CO-ORDINATED BY KERRIE FISHER: Ph 6238 3489

TBA	Valley View Lane	4	Deb Gordon	Yalana East	42
Coleen Foster	Joe Rocks to Norton	20	Rob Gorham	South End - Clare Valley	38
Cassie Fisher	Clare Lane	12	Lyle Montesin	Forrest Road area	60
Axelby Family	North End - Clare Valley	42	Bungendore Shop	Bungendore	10

270 CO-ORDINATED BY JOHN VAN DER STRAATEN: Ph 6238 3590

Sheryl Barnes	Denley/Kestral to End	20	Brian Higginson	Deley/Birchmans - Kestral	12
Don Malcomson	Macs R -- Denley to Gum Flat	7	Rhett Cox	Macs Reef /Nwngtn to Bankers	12
Mindi Hughes	Denley MacReef to Birchman's	26	Morag&Guy Cotsell	MReef /Newington/Harriot (A)	30
Nora Stewart	Rovere Lane	7	Sandra Favre	MReef /Newington/Harriot (B)	20
Robert&Marzena Luton	Sutton/Goolabri Area	40	Joan Milnor	Birriwa & MacsReef(GmFlt-Harr)	30
Beth Hope	Gum Flat Lane	6	Tony Bond	Hogan Drive	28
Carol&Clive Boughton	Macs Reef Rd - Bankers to FHwy	32	Carol&Clive Boughton	Macs Reef Rd - Bankers to FHwy	32

215 CO-ORDINATED BY KEVIN ANDRSON Ph 6236 9333

Trevor Kirk	Macs R - Denley to Bung Rd	20	David Featherston	Summerhil / Creekborough	24
Kevin Anderson	BungRd - McRF to Smmhl	33	Diana+Keith Gascoine	Snow Gum Road	27
Kerrie Gougeon	BungRd - FedHy to Smmh l	25	ThelmaMartin/ChrisFowler	Shinglehouse & Millyn	23
Sue Aunella	Brooks Rd	18	Richard Holding	Wyoming and Doust Rds	25
Phil&Pam Dawes	Donelly Rd & Lane	20			

TOTAL FOR WHISPER 1,146



L.J Hooker Queanbeyan
6297 1744
2/183 Crawford Street
Queanbeyan NSW 2620

Listings Urgently Required!

L.J Hooker Queanbeyan would like to introduce Cynthia McDonald. Cynthia specialises in rural and semi-rural properties in the Palerang and Queanbeyan regions. We have buyers actively seeking both village, rural and semi-rural properties within your area.

Call Cynthia Today for an obligation free Market
Appraisal on your property

0488 250 076

ARE YOU A QANTAS FREQUENT FLYER
MEMBER?

**Special Introductory Offer Of 40,000 QANTAS
Frequent Flyer Points for listing and selling
your property with L.J Hooker Queanbeyan.**

Notice of Temporary Forest Closure

Kowen Forest will be closed to the general public on the 10th and 11th of April, 2010. ACT Govt Department of Territory and Municipal Services, Division of Parks, Conservation and Lands has authorised the exclusive use of the forest for a motor sport event during that period. For their own safety walkers, runners, hikers, horse riders and bicycle riders are advised not to enter the forest from Friday the 9th to Monday the 12th of April 2010. Unlicensed motorcycle riders and unregistered motorcycles are not authorised to enter Kowen Forest at any time and it would be extremely dangerous for them to do so during the temporary forest closure. -- supplied for printing by the Wamboin Fire Brigade, who received this notice

The 2010 annual *Kowen 2 Day Forest Ride* is on Saturday and Sunday April 10th and 11th, 2010 in the Kowen Forest Just North of Queanbeyan ACT

Are You Prepared to Punish Yourself and Thoroughly Enjoy It?

Now that the Canberra Motorcycle Club 2010 Kowen Forest Ride is confirmed as on the way, you will have a decision to make! For those of you that don't know what the Kowen Forest Ride is ... well you are missing out! This is a 2 day dirt bike ride in the ACT that has some of the hardest riding you will ever experience. To make it, you will conquer the "Blackberry Tunnel of Death" and the vicious "Lamb Chop Hill" just to name a few. There will be camping, music and a BBQ on the Saturday night which usually includes a few beers, a bonfire and some good conversations. Food and catering will be provided onsite by Vietnam Veterans, please show your support by purchasing your meals from them. Coffee, cakes & ice creams will also be provided. BYO Alcohol, please no glass and remember you will be riding again on the Sunday.

- from http://dirtbikeaustralia.com.au/10_Events/100410-2010-Kowen-2-day-Ride-Rally.html on 30 March 2010, reproduced here by Ned Noel, editor, so as to provide further information and gripping photos. More is available on the above website. However, entries closed March 21.

I phoned ACT TAMS PCL. A spokesperson at the Namadgi office confirmed the closure and the event. She acknowledged that some residents were concerned about noise. She acknowledged the difficulty of accommodating various points of view. She said that the organisers have worked hard to present the event in a co-operative way that would minimise noise for adjoining areas. She said the bike tracks were purposefully set back from parts of the forest near homes.

Wamboin 15 Years Ago – from the Whisper -- Circulation 500


by Robyn Robertson

No single item stands out but there was plenty of activity designed to improve the lifestyle of Wamboin residents then and now. A few examples:-

- The WCA gave notice of a family bush dance to help raise funds for the playground;
- The General Manager of Yarrowlunla Shire Council will attend a meeting to discuss incorporation of the WCA;
- Peter Greenwood (Councillor) reported on the need to reduce the opening days of the Mac's Reef Tip to 5 per week;
- Council made representations to Southern Tablelands Electricity re the possibility of improving reliability of supply, especially to the eastern half of Wamboin;
- Residents of Clare Valley were concerned that Australia Post was taking so long to consider their application for mail boxes at their gates.

	Dad's Property Maintenance 6238 1071 0417 494 283 www.dadspm.com.au	<ul style="list-style-type: none">• Home Make-overs• General Maintenance• Security doors, Screens, Locks• Energy Efficiency Modifications• Decks and Verandahs• Aged & Disabled Access Modifications• Big and Small Jobs 
<small>NSW Lic: 191292c NSW M/L: 490419747</small>	FREE Insulation (Conditions Apply) Through the Commonwealth Governments Energy Efficient Homes Package	

 <p>Equestrian Australia NCAS COACH (Dressage)</p> <p>Over 25 years experience. Quiet lesson horses for all ages or will come to you</p>	<h1>Karelia</h1> <p>Riding Instruction Canberra</p> <p>2 Clare Lane, Bywong</p> <p>Specialising in private lessons. Quiet well educated horses.</p> <p><i>Angela Miettinen</i> 0416 335 217</p> <p>teammiettinen@bigpond.com</p>
--	---

<h2>R.B. & J.L. LADMORE</h2>  <p>A.B.N. 60 554 873 671 59 BIRCHMANS GROVE WAMBOIN N.S.W 2620 ladmore1@bigpond.com</p> <p>RICHARD: 0427 700 757 JAN: 0407 890 527</p>
--



ANGELA BENNETT

EA NCAS Level 1 General

- ◆ Private & group lesson
- ◆ Rider & horse training programs
- ◆ Competition preparation
- ◆ Clinics

0428 619 822

bennett_ang@yahoo.com.au

www.angelabennett.com.au

Sit well Ride well

Angela Bennett & Anna Mattsson present their

Rider Development Program

A series of clinics that focuses on the riders position and correct application of the aids.

The Rider's Position

Clinic 1 24/4 2010

Geary's Gap PC

\$ 165, non rider \$80



The first clinic examines the foundation of a good seat through extensive theory and biomechanics sessions, while the second and third clinics build on this foundation by showing how the seat can positively

For more information call or email:

influence the horse in motion, through correct application of the aids.

Angela Bennett
0428 619 822
bennett_ang@yahoo.com.au

The aim is to give riders the tools for more effective, effortless communication with their horse.

Anna Mattsson
0400 401 517
anna@annamattsson.com.au

Comprehensive course material is provided for easy reference ensuring participants can keep practicing between clinics.



Int. Group for Equestrian Qualifications



The Swedish Equestrian Federation



INT. LEVEL 2 GENERAL INSTRUCTOR

ANNA MATTSSON

Training you and your horse

0400 401 517

anna@annamattsson.com.au

www.annamattsson.com.au

- Individual & Group Lessons
- Dressage & Show jumping
- Clinics
- Training young horses

Rural Residential Residents - Zones and Options in the Palerang LEP

You may be aware that currently Council is working on the preparation of the first Palerang Local Environmental Plan (LEP). Since amalgamation, Palerang council has been utilizing the LEPs inherited from the former shires of Yarrawlumla and Tallaganda.

The basic LEP template is a document provided by the NSW Department of Planning, and is the same for all NSW Councils – with mandatory sections and clauses. Councils can choose to insert their own ‘stamp’ on the document by adding in specific additional requirements.

In this NSW Government template there are a wide range of zones characterized by different types of land usage and objectives. At present, Zone RU4 – Rural Small Holdings - has not been used anywhere in the current document under discussion, and some residents are concerned that the Zone E4- Environmental Living has been used to cover most if not all current rural residential areas.

On the Palerang website you can see the starting LEP document currently under discussion. Council additions are in red print, and though small and hard to read, there are maps at the back of the document (bigger maps can be seen at the Council offices).

Go to the Palerang website- www.palerang.nsw.gov.au - then under the ‘Your Council’ tab choose ‘2010 Meeting Business Papers’ and select ‘Extraordinary Meeting No. 2 Business Paper - 11 February 2010’ which is what we started with. Changes made as a result of following Council meetings are incorporated in the later business papers.

If you have concerns about the zones that are proposed for your land - you have an opportunity at this early stage to have your say, by either writing to Councillors and Council, or addressing them at one of the Extraordinary Meetings being held for LEP discussions. It would be a good thing for you to hear what is happening for yourselves – rather than to rely on extracts fed to you by the media.

This is an important stage in getting the basics right - before the ‘Draft’ leaves Council hands.

Please be proactive if you have concerns about what is contained in the LEP, and make your views known.

-- Cr Anne Goonan



6262 2525
We put you first



I've got big ears and I am keen to listen to your real estate needs!
I'll hop over to conduct a FREE, NO OBLIGATION market appraisal of
your home.

Ross Hincksman

mob:0417 687 379 email:ross@fngungahlin.com

"Everything he touches turns to SOLD"

This business is independently owned and operated by O'Donnell McAuliffe Real Estate Pty Ltd ABN 67 086 681 487 Lic. Agent
First National Real Estate Gungahlin - 55 Strayleaf Crescent Gungahlin ACT 2912 - 02 6262 2525

Helping Injured Wildlife

by Phil Machin

The Native Animal Rescue Group had a great turn out for its first public teach-in for the community to learn how to rescue injured or orphaned wildlife. The course took place at the Braidwood Servicemen's Club on Saturday 20 March and 35 people came along from as far a field as Canberra, Jindabyne, Bungendore Wamboin, Nerriga, and Tarago. The aim of the course was to teach people how to safely pick up animals and give immediate first aid.

When stopping to check an injured animal, safety is number one priority – not just from being kicked or bitten by the animal, but also from passing traffic. Often all that is needed is to lift and shift an animal off a roadway and place in the direction it was going. Or in the backyard an animal might be in danger from a domestic pet. As Shirley Lack from Tomerong said "A towel and blanket are always useful to throw over an animal to help pick them up if you lack confidence. Where there is doubt in handling wildlife it is best to call on a wildlife group, such as Wildcare which operates around the ACT in NSW and NARG who are in and around Braidwood."

Shirley also said "Its important to check mammals that have been injured on the road, even if they look dead. Sometimes there will be a Joey onboard and it can be saved. Special care is needed in removing a Joey and it might be necessary to cut it out of the mother's pouch. With birds on the ground, they may not need rescuing as they could just be learning to fly. Making a note of the location of where an animal has been rescued is important, so it can be returned to that area when it has been rehabilitated."

Snakes must always be left to specialist handlers – for obvious reasons. Bats can pass on disease and raptors can cause severe injury. But for many animals, such as lizards, turtles, echidnas, birds and many mammals - its OK to have a go to the extent you feel comfortable. Rosemary Garlick from Wamboin spoke about zoonoses (diseases passed from wildlife to humans) and she said "the best way to avoid picking up an infection or disease is to make sure you wash your hands after touching an animal. Some animals have fleas and lice, which can transfer to you, but these can be easily dealt with."

There is much to learn about our wildlife and if you are interested in being more involved, why not join a group such as NARG or Wildcare.

Rainfall and Temperatures in Wamboin – 35 Year Statistics from the Robertsons

February Rainfall ... 170.75mm	Feb 2009 ... 13.75mm
2010 rainfall to 28/2 ... 176.25mm	2009 to 28/2 ... 75.25mm
Average March rainfall ... 55.3mm	March 2009 ... 10.75mm
Wettest March ... 303mm in 1989	Wettest March day ... 160mm on 15/3/89
Driest March ... 3mm in 1986 and 1998	Hottest March day ... 35 degrees C on 8/3/83
Coldest March day ... 13 degrees C on 14/3/94	Coldest March night ... 3 degrees C on 28/3/99

DOG LOVERS-Dog Training and Behaviour for Beginners-IN BYWONG

A well-behaved dog is a pleasure to own. Spending a little time with your dog each day and knowing just what to ask of your dog is what this course will teach you. You will be learning about basic dog behaviour and psychology, as well as 13 obedience exercises, such as sit, drop, wait, come and walking on a loose lead. These classes will also discuss dealing with dogs and snakes and how to control dogs around livestock and wildlife, including advice on how to train your dog to avoid snakes. Children are very welcome to the classes, however please discuss with us if your child will need help from an adult throughout the lessons.

Class duration: 1 ½ hours Cost: \$115 per dog for the 8 weeks. Class limit: 7 people

Please call Heike Hahner on 4842 7143 or email hhahner@bigpond.com.

Dog Training & Behaviour Consulting, Canine Communications.

REG GIRALDI Licensed Builder

NSW 145587C ACT 2953C

New Homes, Extensions Bathroom and Kitchen
Renovations, Carpentry, Tiling, Painting,
Gyprock Repairs, Concreting,
All Repairs and Insurance Work
0416 075 910 (Mobile) or 6238 0918 (ah)
HIA Member

FOR SALE

Locally grown Native and Exotic shrubs and trees,
suitable for this area.

150 mm (6") pots \$5.00 200 mm (8") pots \$9.00 Fresh

Cut Flowers



Kleenheat Gas Dealer, Wamboin, Sutton and Geary's
Gap Area. - Rural Services
WIYAGIBA TRADING – Dave and Jane Hubbard 37
Poppet Road, Wamboin Ph/Fax 6238 3308



BUNGENDORE RUGBY FOOTBALL CLUB

Welcomes Players and Supporters for the 2010 Season

The Season draw

Date	Opposition	Venue
8 May	Harden	Bungendore
15 May	Bye	
22 May	Crookwell	Crookwell
29 May	Vikings	Bungendore
5 June	Taralga	Bungendore
12 June	Bye	
19 June	RMC	Duntroun
26 June	Boorowa	Bungendore
3 July	Yass	Yass
10 July	Jindabyne	Jindabyne
17 July	Bye	
24 July	Harden	Harden
31 July	RMC	Bungendore
7 August	Crookwell	Bungendore
14 August	Vikings	Tuggeranong

Bungendore MudChooks Host Dingo

by Peter Evans

On Saturday 8th May, Wallabies coach Robbie "Dingo" Deans has generously offered to visit Bungendore to speak to the Mudchook's players, supporters and the local rugby community. The Mudchooks will be hosting "Brunch with Robbie" at the Bungendore Showground Luncheon pavilion commencing at 11.30am. The cost will be \$30 per head and tickets will be available at Bungendore Cellars or by contacting Glynn Templeton on 02 62380590.

We hope that we will be seeing all local rugby fans at the event and afterwards at the first home game of the season vs Harden with a 3pm kick off at Mick Sherd Oval (Coop of Pain), Bungendore. This game will be the Grand Final rematch.

The Brumbies will also be playing the Highlanders that night at 7.40pm so it will be one big rugby day.

Just a reminder that both Wamboin based players and supporters are most welcome to your local Rugby Club.

AAA ALL AREAS WATER CARRYING DOMESTIC WATER 7 days Prompt Delivery

STAINLESS STEEL TANK (14,000 ltrs) ACTEW Approved Tankers, for Tanks, Pools, etc.



GARRY 0428 626 838 or 6297 3648

Local Water Carrier for 19 years PO Box 807, Queanbeyan, 2620

KERIN HAULAGE HAY DELIVERIES

Oaten and Lucerne delivered to your door, rounds and small squares available After Hours and Weekend deliveries

Call Mick on 0405-478-056

Wamboin Golf Results

The Wamboin Golf Club's March game was a stableford event sponsored by club member Rob Gorham and Step to Step Couriers.

Our two youngest players, Rachel Schroder and Logan Beckett, shared the Encouragement award for the month. Nearest the pin and long drives ball winners were Tim Barter, Jack Whitney x2, Joan Mason, Jason Beckett and Larry King, even though Larry did not play. In his imagination he assured us that had he played he would have had the game of his life and cleaned up. Unfortunately his imagination did not match that of the handicapper. Larry won the Googly Ball award based on that story.

For a change (probably the one and only) the 9 hole event was run on the "other" 9 holes rather than the usual 9. The winner of the 9 hole competition was Peter Greenwood from Lofty Mason in second place and Joan Mason third. Winner of the 18 hole competition was Jack Whitney from Tim Barter second on count back from John Whitney.

The next game will be put back one week to avoid Easter and will be held on **11th April**. The competition will be the Wamboin Mini Masters run over 2 rounds of a special 6 hole course.

Golf enquiries to Peter Greenwood 6238 3358

Lake George Day View Club

by Lydia Teodorowych

The April meeting of the LGDVC will be held 11.30am for a 12 noon start on Tuesday 20 April 2010. RSVP Friday 16 March to June on 6236 9136. Lunch is \$17 at Logan's Cafe. As usual we will have a raffle and door prize and speakers.

Remember 2010 is the VIEW Clubs of Australia 50 year celebration and the Australia wide Convention is being held in Canberra, so this is a prime opportunity to join your local VIEW Club or renew a lapsed membership and be part of VIEW Club history.

Last month we had speakers from the rural fire brigade and learned how to prepare our selves and our properties from from fire over the summer months. Lake George Day VIEW Club also spent a day at The Governor General's House selling Devonshire Teas, showing guests through the GG's House and telling guests about VIEW Clubs, thanks to Pauline, Anne and

Lydia. Thanks also go to Fiona Spottiswood for her hard work in organising such a grand event and VIEW's participation in it.

For an over view of our activities and photos visit our blog: <http://lgdviewclub.blogspot.com>



Birchmans Estate at Wamboin

The Birchmans Estate Subdivision in Wamboin has now released some Premier Rural Residential Blocks for sale.

With the trend towards a semi-rural lifestyle and a strong sense of community amongst the friendly residents of Wamboin, the newly released subdivision at Birchmans Estate offers a wide range of blocks providing lifestyle opportunities within easy travel distance of Canberra, Queanbeyan and Bungendore.

There are 40 spacious blocks from 2.5Ha to 103.81 Ha with generous home sites incorporating the best views whilst maintaining distance and maximum privacy within the subdivision.

This subdivision has superb equestrian blocks to suit all horse activities. There are plenty of level to undulating blocks as well as having the benefit of access to community bush trails through the hills.

If you like to listen to the chorus of the native birds then you can't go past the secluded bush blocks offering peaceful walks amongst nature. View the distant snow capped mountains in winter!

Whether you are starting a family, needing some space for a growing family, thinking of retiring or are just looking for a lifestyle change then Birchmans Estate has the block for you.

These blocks are freehold with 5kms of tar road frontage, fully fenced with all services available. Permanent water reticulation is provided by a 17mg dam & 16mg bore with each title having an allocated water supply.



So make the right decision when considering your future happiness be it an active lifestyle or a more sedate one and take a look at the wide range of blocks on offer now at Birchmans Estate, off Denley Drive in Wamboin.

Jan Ladmore
Bungendore
Ph 0407890527
E-mail: jan.ladmore@bigpond.com

HORIZON Real Estate

Phone or e-mail for maps, photos or to book an inspection.

Bungendore Office : 0262381106
Kingston Office: 0262953211
www.horizonrealestate.com.au

**Comments from the Wamboin Volunteer Rural Fire Brigade
in Support of a Development Application to Palerang Council by Telstra
to Construct a Telecommunications Tower on Millpost Hill in Wamboin
to Provide Mobile Phone Coverage to Wamboin and Bywong**

The Wamboin Volunteer Rural Fire Brigade supports improved mobile phone coverage in the Wamboin and Bywong areas. With regard to the location of a monopole telecommunications tower and the extent of coverage, the desire is to gain broad and consistent mobile phone coverage from the best possible site in the region.

The primary reason for the Brigade to support this development is our concern and obligation for *community safety* in relation to bush fires and other emergencies.

As a follow up to the Coronial inquiry into the Victorian bush fires in February 2009, Australia is implementing a *National Emergency Warning System* (NEWS). This system relies on messages sent to fixed and in particular mobile phones to warn of impending emergencies. To receive this message outside your home you must have a mobile phone with a *registered address in the area threatened by the emergency*. The added advantage of this system is that you will receive the warning wherever you are with your mobile phone in your possession. The Wamboin Fire Brigade sees this as a *vital safety warning system* which should be implemented as soon as physically possible and with the best available coverage across Wamboin and Bywong.

There are many *additional safety advantages* with a local mobile phone system such as reporting fires, reporting motor vehicle accidents, calling for assistance in the case of mechanical breakdown, a personal accident or snake bite, as well as for security reasons. There have been several instances in the community where timely calls for emergency assistance have been compromised by poor mobile phone reception in the area.

People also rely on mobile phones for business, private and social reasons and somewhere to divert their land-line phone to when outages occur through lightning strikes to the ageing copper network.

We suggest that to help alleviate some community sensitivities over the visual impact of a 25m high monopole on Millpost Hill, Telstra should consider underground power, landscaping including the planting of trees and shrubs around the tower site and low impact construction of the proposed access track off Hogan Drive. This would be appreciated by the community and well received as a Community Service Obligation from Telstra.

The Wamboin Fire Brigade supports and welcomes the long overdue mobile phone coverage throughout Wamboin and Bywong. -- Peter Greenwood, President, Wamboin Volunteer Rural Fire Brigade



**SHEPHERDS RUN
AT WAMBOIN**

ANTIQUES SALE!

- **Up to 50% off the antiques at the Cellar Door! Come in and check it out!**
- **Don't forget the Canberra District Harvest Festival Sat 10 & Sun 11 April - The KarismaKatz duo, grape stomping competition, fun events, special menu, make a day of it! *Bookings for lunch highly recommended.***
- **Takeaway pizzas Friday & Saturday evenings + breads, chips, soft drinks & wine. Menus are being delivered to letterboxes or feel free to pop in & pick one up.**
- **We are seeking kitchen and wait staff – award pay & a fun place to work.**

Please ring Elke on 6238 3842



MR SWEEP CHIMNEY & FLUE CLEANING

Slow Combustion & Open Fires Swept
Repairs & maintenance

**SPRING DISCOUNTS NOW
AVAILABLE**

- Chimney Dampers & Bird/Possum Mesh
- Fire Bricks for Slow Combustion Heaters
 - Flue Extensions & Top Caps
- Glass Replacements and Door Seals
- Heater Fans Serviced and Replaced
 - Pre Gas Chimney Cleaning
- Roof Ventilators Supplied and Installed
 - Safety Checks Available
- S/C Heaters Removed or Replaced
- Smoke Detectors Supplied and Installed

For appointments or further information
please phone Brian

6258 1792

Current Position – Macs Reef Transfer Station

By now you probably will have read that Palerang Council considered the report on waste management options for Wamboin & Bywong at the March Ordinary Meeting and voted to proceed with the construction of a waste transfer station (WTS) at the Macs Reef landfill site. Council also voted to include the provision of a WTS at Macs Reef in its draft 2010/11 Management Plan and determine whether to proceed with the facility after consideration of community comment received at the end of the exhibition period.

The lead up to this position has not been easy. The community survey, the Environment, Heritage and Concept Options reports all have been positive and have not found any meaningful reason to oppose the clear wish of the Wamboin and Bywong communities for a small transfer station at the Macs Reef landfill site. The staff report to the March Council Meeting was based on the report by the Waste Management Working Group comprising Councillors Bransdon, Goonan and Turley, council staff and representatives from the Bywong, Sutton and Wamboin Community Associations. The staff report recommendations accord with the recommendations mentioned in the voting above.

The voting in Council told a story. Of the 9 Councillors, Councillors Bransdon, Cockram, Goonan, Moore and Turley supported the establishment of the WTS while Councillors Crozier, Graham, Marjason and Mayor Reynolds opposed it. Councillor Bransdon spoke eloquently in favour referring to the wish of the communities, making up at least 25% of the Palerang population, the costings of this site compared with existing and proposed transfer station sites and the environmental advantages for not only Wamboin and Bywong but also for all Palerang. Some logical opposition was expected but it became evident from the entrenched position of the Mayor and the spurious rationale of Councillor Graham, on the costs for the establishment and servicing of the transfer station, that there was a concerted push to deny the communities this facility. The spin employed and inaccurate information was very telling. It became evident after the Meeting that the result had upset the Mayor, Councillor Graham and the Palerang General Manager.

There are more hurdles yet. It will be interesting to see if the WTS proposal makes it to the Draft Management Plan stage and, once there, what the result(s) will be from the debate.

The Bywong and Wamboin communities provide a significant input to the Palerang economy, not just in rates, and yet some Councillors choose to ignore the wishes for this basic community facility. Why? Where is the respect for the democratic process? I encourage you to maintain contact with all Councillors to remind them of the need for a WTS at the Macs Reef landfill site similar to that at Captains Flat and those projected for other Palerang localities. -- John van der Straaten



sutton
REAL ESTATE



our heart's in the country

- Free, no obligation appraisals
- No Sale, No Fee
- No advertising costs
- Guaranteed lowest commission
- 3 salespeople selling your property
- No "locked-in" agency agreements
- NSW Real Estate Institute membership
- Advertising on 4 websites
- Full range of property management services
- 6 staff based in our prominent Bungendore office
- Established 20 years

We get great results! Ph 62380999

sales@suttonrealestate.com.au rentals@suttonrealestate.com.au

SUTTON SCHOOL NEWS

by Jenny Priest, Principal

One term in and Sutton's Kindergarten class of 2010 has settled in beautifully! It has been a very busy term for all, and the time has flown by. This year we have implemented the NSW Department of Education's 'Best Start' program. This has involved a 'pre-assessment' of students' skills before they begin Kindergarten. This program allows the class teacher to get to know the children and the knowledge and abilities they bring to school. From the assessments, I have been able to tailor learning programs to meet individual learning needs, and also offer handy tips and strategies for parents to use at home to help children develop their skills in literacy and numeracy.

Our Infants Picnic in week 5 was also very popular. We all travelled to Questacon for the day, giving parents an opportunity to mingle and get to know one another, whilst the children explored the many items on display. On Canberra Day, parents and friends were invited to come in and take a look at all the wonderful things that are happening at Sutton Primary, and gain more of an insight into the learning programs that we have in place. Whilst the day was a little wet, our visitors were able to take a look around the school and enjoy a sausage sizzle lunch with the children.

To finish up a wonderful term, we have the fete this weekend, followed by our annual Easter Hat Parade and Easter Egg hunt. It has been a great term and we look forward to lots of learning to come!

Sutton Public School invites any prospective and interested Kindergarten to Year 6 parents and students to attend our: Open Morning for Prospective Students in 2011 Kindergarten to Year 6 Thursday, 20th May 2010 9.30am - 11.00am. Staff, parents and students will be on hand to speak to you and answer your questions. Tours of the school facilities will be conducted. Enrolments for 2011 are now being taken. RSVP and enquiries: 6230 3215 Email: Sutton-p.school@det.nsw.edu.au



Telstra Mobile Phone Tower on Millpost Hill Greenway

A few weeks ago, many residents of Hogan and Denley Drives received notification of a Development Application (DA) for the construction of a "Monopole" on the Millpost Hill Greenway. Further detail in the DA indicated that the proposal involved the construction of a 25m tower, 3 antennas (taking the overall structure to 26m), a parabolic microwave dish, a 60m² compound surrounded by 2.4m high chain link "security" fencing topped with barbed wire, a facilities shed (3m high by 2.2m wide, by 3m long), and above ground power lines running up the Greenway from Hogan Drive.

The top of the tower contains a head-frame whereby the antennas stick out from the monopole. Such a structure provides opportunities for future expansion and the addition of several more antennas. In addition, should the DA be approved, up to another 5m of height can be added to the structure at any time in the future without the need to seek approval on the basis that this would be considered "low impact". This could take the tower to approximately 30 plus metres, twice the height of the only two trees on the hill.

Millpost Hill is a prominent ridgeline running through central Wamboin. It offers spectacular views across the locale. The Wamboin Community Association features this view on their internet home page. The Greenway network is used extensively by the residents of Wamboin and Bywong, and visitors are often taken to the summit of Millpost Hill to admire the view. It's not just the panorama which will be different; a large telecommunications facility on the summit will certainly make it a less attractive place to live, visit, ride or walk through.

According to the NSW Government, Millpost Hill was established as a Crown Reserve more than 130 years ago. Early in 1880, a trigonometric station was established on the summit. The constructed stone cairn on the summit is the original station which in turn triangulates to the famous Lake George Base Line.

While not indicated in the DA notification, interested residents were able to obtain a "Statement of Environmental Effects" (SEE) from council. While this document provides additional information of the proposed development, it contains many factual errors (in one part discussing running power from Denley Dive, and in another, running it from Hogan Drive) and makes several statements indicating that the author knew little of the area or the Greenway network. According to page 18 of the SEE, "*In summary the proposal would not have a detrimental impact upon the surrounding area and due to its slimline nature would not be considered intrusive when viewed over short and longer distances...*". While ascetics are often considered to be in the eye of the beholder, it is doubtful many would consider a telecommunications facility on a prominent and largely open hilltop, towering twice the height of the few trees that do exist, to be non-intrusive? The report is rushed and does not accurately consider the impacts of the facility on the surrounding area. The application also does not address legislative rules and regulations around Crown Land use and Council's community land obligations.

The proposed use of the Greenway network for a commercial operation is at odds with the purpose for which this community resource was established. According to the DA, above ground power will be run from Hogan Drive up the Greenway, while at the same time a trench will be dug for communications cabling. Some may question why there is a need to run power above ground, when a perfectly good trench will be dug? In addition to this, the Greenway, referred to as an "access track", will be "upgraded"; so much for the trees planted by Landcare and so much for motor vehicles not being permitted on Greenways! How will the proponent ensure this newly cleared steep track will not erode? The council would make residents seal a driveway with a lesser gradient than this.

We all know that many parts of Wamboin and Bywong suffer from poor mobile phone reception and this has been a long running discussion with Telstra. We guess this is what causes a division amongst the residents. Most people want improved mobile coverage but should this be at the expense of views, health and amenity? The proposed tower is within 150m of some residences and in the middle of a Greenway widely used by the community. It is interesting to note that a phone engineer recently informed us that Millpost Hill will not actually guarantee blanket coverage due to the local topography and black spots or shadows which will still remain. Is it phone coverage at all costs or looking for a balanced solution?

A few years ago, the WCA heard from the then Manager of Telstra Countrywide that the currently mothballed Telstra microwave link monopole on Poppet Hill was a candidate for re-commissioning, in order to provide improved mobile coverage for the area. This existing site amongst several other options remains idle.

Whilst we do agree improved mobile coverage in the district is desirable, we consider that the Millpost Hill Greenway is not an appropriate site for such a facility.

We suggest that the proponent should discuss with the community and investigate their existing facilities or consider to co-locating on existing structures (such as high voltage power lines), and identify less intrusive sites (such as those on the rural residential area boundary or broad acre land) so that we can have that important mobile phone coverage as well as keep our community amenity, health, recreation and views for all.

-- Alex Taylor (Hogan Drive)

-- Peter Evans (Denley Drive)

Electrical Contractor (Bywong)

Roland WOLF NSW & ACT Licensed

Installations and Repairs Domestic & Commercial All Work Guaranteed

0402 156016 rgwolf@bigpond.com

The Annual Bywong Car Boot Sale and the Wamboin Volunteer Rural Brigade

As usual, the community's fire brigade was involved in helping out at the annual Bywong Car Boot Sale held this year on Sunday 28 March.

It was a beautiful day, lots of sellers and buyers (young and not so). The brigade helped out at a number of levels, eg collection of entry fees, car parking, fire-related demonstrations, members under the RFS marquee helping people with bush and other fire-related enquiries including their bush fire survival plans and, of course, there was the brigade's much sought after sausage sizzle. Further information will be included next month but below are a couple of photos as a taster.



Children getting to use a bush fire hose under the guidance of Crew Leader Matt O'Brien with Steve Richards on the pump.



What's the old saying... 'First in, best dressed'. Members of the Brigade's Support Crew - Support Crew Coordinator Wendy Downs, along with Clare Hobbs, Jane O'Brien and Frank Watson offering up some of the brigade's famous bbq goodies. (Photos courtesy of Peter Greenwood)

Finally, advance notice for all the young people (and parents) out there. Planning for next month's brigade newsletter is underway. We're proposing to include a fire-related article with a special *kids-wise* focus.



**Chainsaw Brushcutter Blower
Sharpening Repairs and Service
Pick up and Delivery Available
or drop at The Feed Shed
King St, Bungendore
Phone Greg Welch 6238 3437**

News from WWOW The Wonderful Women of Wamboin

by Sally Saunders

WWOWs in the Media: After our excitement to be a feature on the 666 ABC Morning Show in February, we were surprised to discover a Saturday feature reported on our trauma teddies for the Queanbeyan Ambulance service. The radio feature included an interview with one of those handsome paramedics who hand the teddies out to children. That seemed to give us all incentive, because in March more knitting needles had teddies hanging off them.

International Women's Day: Palerang Council asked the Wonderful Women of Wamboin to host a celebratory luncheon for International Women's Day. Early on Monday, 8 March, volunteers turned the Wamboin Community Centre into a festive venue with white draped tables, hand crafted wall hangings of rural scenes, lots of greenery and bouquets of colourful zinnias and roses. Next the volunteer chefs arrived with a luncheon of cold roast chicken and salads of many types.

More than 70 women joined the luncheon including Palerang Councillors Catherine Moore, Judith Turley and Anne Goonan. Everyone listened with interest to a presentation by Eleanor Gregory, a political reporter for ABC radio whose parents live in Palerang. The theme was: "How women can help stop poverty by 2015". Eleanor shared many statistics from the United Nations to clearly convey what real poverty is and how many people suffer because of it—especially women. She then focused on poverty within our own country and culture, and ways many of us can help children escape the downward spiral of poverty through education.

Seniors Day in Palerang: A group of WWOWs enjoyed the Seniors Day luncheon at the Lake George Hotel on Thursday, 25 March. Bungendore's new pharmacist, Peter Doyle, spoke, as did Dr. Marjorie Cross from the Bungendore Medical Centre. Both speakers emphasized the opportunities and needs to plan for aged cares services in our communities. The Bungendore School choir gave a wonderful recital that was received with lots of applause.

All women are welcome at WWOW -- Mondays, 10 AM to 12 NOON at the Anglican Church on the corner of Poppet Road and Norton Road in Wamboin. The Convener is Claire Ayling, 6238-3347, and members come from Sutton, Gundaroo, Bywong and Wamboin, with a few from ACT and Queanbeyan.

Whisper Advertising Rates to Increase as of May, 2010

Partly due to slight increases in Whisper printing costs over each of the last eight years and partly due to an increase in the ratio of news to ads, advertising costs will go up as of the Whisper's May 2010 issue. The new costs, based on the fraction of an A4 page used, will be:

1/8 Page -- \$20 1/6 Page \$25 1/4 Page \$30 1/3 page \$40 1/2 Page \$60 Full Page \$120

The last rate increase was in February, 2002, when the price of a 1/8 page ad was raised to \$15, a half page to \$50, and a full page to \$100. To those of you make the Whisper possible through your advertising, I realise this represents an increase in costs to advertisers, and will be very grateful if you can find a way to continue, even if it means reducing the size of your ad. To those of you who read the Whisper, please continue to spend your money with Whisper advertisers when their services and goods fit your needs. - Ned Noel, editor

Paid Classifieds

Alpacas For Sale. Breeding females from \$650. Pets & guardians from \$250. Ph 6230 3311 www.alpacamagic.com.au

Livestock Workshops. "Alpacas & Llamas for Fun & Profit" & "The Magic of Donkeys" "Introduction to Felting with Alpaca & Llama Fibre". Check our website for dates etc www.alpacamagic.com.au or Ph 6230 3311

Donkey Clinic - About Breeding and Showing Donkeys. Also becoming a qualified Donkey Judge. Instructor is a highly respected Judge from the USA. 7th & 8th Nov at Pegasus, Holt. To book Ph 6230 3311. www.donkeyallbreedsaustralia.org

 <p>Security Doors & Grilles</p> <p>Many styles and colours Made to measure Repairs Keep your home cool and protected</p> <p><small>NSW Security Master Lic: 409419747</small></p>	 <p>Dad's Property Maintenance 0417 494 283 6238 1071</p> <p>www.DadsPropertyMaintenance.com.au</p>	<p>Roller Shutters</p> <p>CSIRO approved fire protection Many colours and designs Control light and heat into your house</p>  <p><small>NSW Lic: 191292c</small></p>
--	---	--

SUPPORT for the Proposed Mobile Phone Tower

I am writing as a Wamboin Resident and Sometime User of a mobile phone - in SUPPORT for the proposed Mobile Phone tower installation on Millpost Hill at Wamboin.

I say as a sometime user of a mobile phone - as I personally (generally) only use my mobile phone in conjunction with my work in Canberra. However I realise that on past occasions' my mobile phone has been used in life threatening and somewhat harrowing circumstances':

- two accidents on Macs Reef Road, the first one involving my own vehicle in a collision with a Kangaroo, the second as an immediate witness and first to aid, a two vehicle crash on this same stretch of road. The mobile phone was used in both circumstances, in the second one to summon an Ambulance and other emergency vehicles to tend to the injured.

- in the January 2003 Canberra Bushfires, I unfortunately lost my own home in the devastating bushfires, and as the fire impacted on the Western Fringes of Duffy - very quickly both the aerial Power & Landline Phone infrastructure failed in the area. This left my only means of communication, a mobile phone - to locate family, neighbours, and friends during the terrifying blackness that descended on the suburb. It is during these times - that reliable modern communication is truly cherished.

Yes - these were dark times - but I'm sure many more of my neighbours here in Wamboin & Bywong can think of many happier things in their use of mobile phones' out here:

- Family Communication - including locating family members out and about.
- Business - including Farmers, Wineries, and ancillary Rural business.
- Organising tradespeople from Canberra, and assisting in their safe arrival at your property.
- Local workers, who rely on a modern communications system to successfully run their Home or Rural Businesses in the area, or remotely work from home for their City based employer.

The site and location of Mobile Phone infrastructure will inevitably cause some within the community to have concerns and questions, or even downright objections to the building of the facility in the first place. I would like people to consider, as they weigh up the pros & cons of this, the following thoughts:

Do these people, or their children, already have a mobile phone, given their "concerns" for potential electro-magnetic radiation (EMR) emitting from these devices so close to their heads?

The widespread use of mobile phones, and other mobile devices, such as the recent explosion in 3G enabled devices (e.g. iPhones, Wireless Laptops, Wireless Internet Modems), that then require the need for new or larger towers. If people generally - including concerned parents - will they be disposing of their mobile phones, and these previously mentioned devices, to eliminate the need for the construction of new towers they are so concerned about?

People should also consider that the modern home is surrounded by "mobile" and other devices, emitting some sort of energy - from the obvious Radio & Television devices, through to Wireless Modems & Routers attached to Broadband Equipment, and other Home Office or Home Entertainment equipment - such as faxes, wireless telephones, laptops, personal computers, printers, Global Positioning System (GPS) receivers, digital cameras, and video game consoles.. All these electronic devices either emit EMR, or on the receiving end of it from another device.

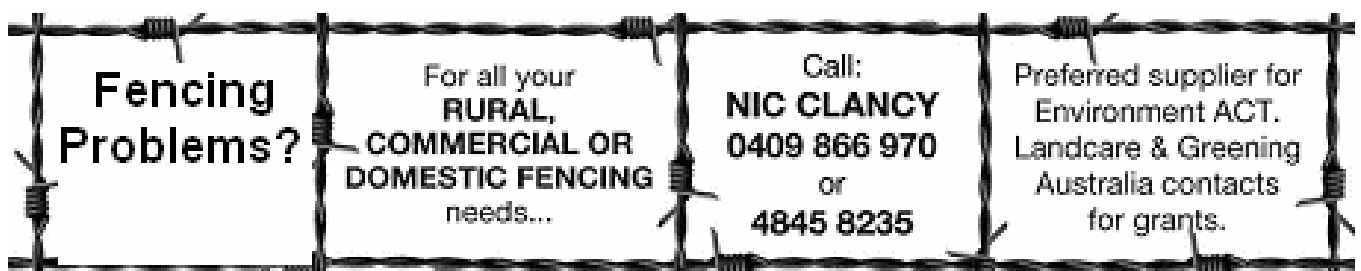
I'm not trying to be flippant about people's concerns - however - it is generally accepted that we live in a modern "always on" communication age - where fast, reliable, constant, and geographically complete communications and their ancillary services are provided. We just cannot really say - I am happy to use these mobile services elsewhere - just not where I live.

People want the convenience of "everywhere" communication, but don't like it when the infrastructure required to support their needs, actually has to be placed in their own "backyard".

In doing some of my reading on this topic, I found the following of interest - Some common concerns raised by Mobile phone towers going up in rural areas are:

1. Potential health risks associated with electro-magnetic radiation emissions from the towers: Submissions made in relation to this issue are largely emotive or subjective rather than being objective. From my reading - the proposed development complies with the EMR standards in both national and international studies. More information on this can be found at <http://www.arpana.gov.au/mobilephones/index.cfm>

(continued on next page)



Fencing Problems?

For all your
**RURAL,
COMMERCIAL OR
DOMESTIC FENCING**
needs...

Call:
NIC CLANCY
0409 866 970
or
4845 8235

Preferred supplier for
Environment ACT.
Landcare & Greening
Australia contacts
for grants.

2. Visual impact on the landscape: It is acknowledged, that it will be visible, however, this visual impact can be mitigated through appropriate design factors and possible tree plantings. I find it strange on the visual impact, that (existing) housing on the hills around Wamboin & Bywong - clearly seen from Norton Road, and other road approaches - can also impact on the rest of the community - but this is not considered as a visual impact when approvals are given for these buildings'. In regards to the tower - The community should request landscaping around the affected area and this could be in the form of a grant to the local Landcare group.

3. Request for selection of alternative and/or more appropriate sites: In Wamboin, a previous area on Poppet Hill was identified as a possible site. However, past discussion of this indicated partial coverage of the Wamboin Area and little or no coverage in the Bywong area. The Millpost Hill site will give the Wamboin and Bywong area the best coverage. Other sites may be found, but the trade-off is less mobile coverage and the same impacts will be passed onto another residential group(s). It is hoped that the Telecommunications' carrier constructing the tower, will have mapped the surrounding region, and try to maximise the coverage for the Wamboin and Bywong localities.

4 Reduced levels of amenity enjoyed by existing residents and not consistent with prevailing character of the locality: The monopole design of the structure of the mobile tower will not be obtrusively visible in Wamboin/Bywong when compared to existing Electricity poles - including two Main High Voltage Feeder lines through both Wamboin & Bywong. This is also not the first mobile tower to go up in the region (towers can be seen on hills in surrounding Palerang) but this will give the surrounding areas mobile coverage for the first time.

The positives of the tower will be to increase the level of mobile phone coverage in the area providing positive economic and social impacts, and the site could also be used in the future as a marker or bearing point in the locality for situations such as bushfires or medical emergencies.

In conclusion, telecommunications base stations' are a common place in today's society, and increasingly, the expectations of communities are for Telecommunication Carriers of ALL persuasions to provide greater coverage. A significant proportion (if not majority) of the community use mobiles and/or wireless internet connections, but continue to complain about the performance or the service (or lack thereof). In rural areas, a large percentage of calls made to Emergency Services (e.g. 000) on the road, or in a Bushfire or other Natural Disaster / Emergency, would be made from mobile phones if coverage allows. This is of particular concern here in Wamboin where mobile phone coverage does not extend as far as it does in the metropolitan areas.

The Wamboin community has in the past enjoyed a collaborative & constructive dialogue with a major Telecommunications carrier - especially during the time of the CDMA Closedown / NextG Migration - and I hope that this positive discussion will continue with them in the provision of enhanced communication facilities' here in Wamboin & Bywong. - Don Horan, Norton Road



THE WAY OF THE SAMURANG

HEIGHTEN YOUR INNER STRENGTH

FITNESS TRAINING OF THE MIND AND THE BODY

KIDS AND ADULTS AGES 9 AND OLDER WHO ARE INTERESTED IN LEARNING THE ANCIENT KOREAN ART OF THE SWORD

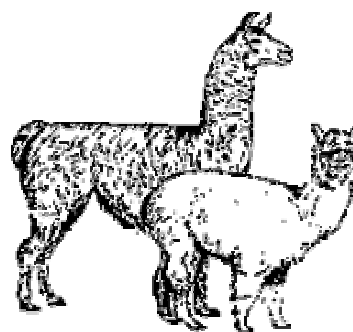
instructor
JASON KIM

0430 436 437

KIM'S HAIDONG GUMDO
399 NORTON ROAD WAMBOIN
www.haidonggumdo.net.au

Autumn Open Day & Reduction Sale

Sunday 26th March from 11 am



Alpaca Magic

www.alpacamagic.com.au
or phone Glynda 6230 3311

Fishing Club

The last meeting went well, we had a meat raffle as fundraiser and it was successful.

A special thanks goes out to Lyle and Bob for their efforts. It has been great to hear about members fishing trips recently. The Pirtek Fishing Challenge is coming up very soon and we look forward to the feedback at the next meeting. The Wamboin Fishing Club meetings have been moved to the third Wednesday of every month; Held at 5.30pm, Eaglehawk Hotel. Our next meeting will be April the 21st.

Word has it, the lakes are fishing well. Tight lines.

-- Chris Byrne of Hogan Drive

Notice to Local Artists and Artisans

Submitted by Lyn Randall

The pARTnership is once again organising it's exhibition for local artists and artisans in the Bungendore School of Arts. This time it is being held in conjunction with Rotary's Lake George Harvest Festival and Art exhibition being held on the weekend of 15-16 May 2010. Our exhibition will be included on the "Art Trail", a map showing a suggested route around Bungendore's participating Art establishments. This combined event should attract a larger number of visitors to the village and, hopefully, more people through our exhibition.

We invite all local artists and artisans to exhibit their work and make this exhibition our best yet. The entry fee is \$20 to cover hall hire and advertising and, as usual there will be NO commision charged on sales.

For an entry form please contact Lyn on 6238 3291 or lyn.randall@eclipseystems.com.au entries must be received by 16th April. We also encourage you to enter Rotary's Art Competition and an entry form for this will be included with our own.

Clean Up Australia Report

By Lofty Mason

Almost a month has passed since we took part in the Clean Up Australia Day. Our efforts concentrated in the clean up of rubbish along local roads. The team cleared 36K of roads and picked up about 2 tonnes of rubbish. We had 27 volunteers register which compares with the 32 we had at our first CUA Day. That figure looks pretty good until you realise we now have about 5 times the population. The Fire Brigade guys were a great help in coordination of workers and rubbish bag collection. We also appreciated the assistance given by Council who loaned the HV vests and roadside warning signs. Council also donated money for the purchase of drinks and chewy bars and the following week they picked up the pile of collected rubbish. The cleaned road verge looked great for a while but I notice the rubbish is gradually being replaced. I feel better about that if I imagine what state the roads would be in if we hadn't taken part in the last 25 clean-ups.

BRUCIC EXCAVATIONS

Trucks, Bobcats and
Excavators for Hire
Rock Hammer, Auger and
Pallet Forks
Roadworks House Sites
Sheds & Garages Water Tanks
Footings Sand & Gravel
Landscape Supplies
Supply and Install Septic
Tanks and Absorption Trenches

Enquiries Phone Darko
Phone 6238 1884 Mobile
0408 682 191

Annie's Collectables



... for that
something
extra special

39 Cooper Road, WAMBOIN

OPEN 10.30am - 4.30pm
Weekends and Public Holidays

Or by Appointment
Ph: 6238 3284

GREAT HAIR



Beauty on the Go now offers Mobile Hairdressing

1300 GO GIRL

www.beautyonthego.com.au

Wamboin Muse

Jill Gregory

I've often wondered how we'd initiate a conversation with a stranger, or even a friend, if we didn't have the neutral topic of the weather to begin with. In Cairo the weather is literally unremarkable; it just doesn't change so no one talks about it. If we were commenting on the weather in the high northern latitudes we'd need at least a dozen different words for what we simply call "snow". This first month of autumn has certainly given us plenty of scope for easy chat.

At the start of the month I was tempted to clean out the twinkling tinsel from the firebox, the last remnants of Christmas decorations. It was almost cold enough to light a fire at night, and I was hard pressed to remember where I'd stowed my winter woolies. I needed them. It seemed as if we'd plunged straight from summer into winter, but we'd forgotten the fickle nature of autumn. Winter was but fleeting. Soon I was waking to gossamer mists, green grass heavy with dew and the sun catching the facets of a million diamonds. Then summer returned with hot dry winds from the north, sucking out moisture and igniting only tempers, and as suddenly as it came, it passed and we were lost in a silent white fog. And through all these changes the season has been quietly making its mark.

I have roses in my garden that I hadn't seen in spring, masses of pink and white salvias, abelias flecked with white flowers, brightly coloured chrysanthemums, dahlias and canna lilies, and white flowering potato vine rampaging over everything. Amongst the natives the hardy correas are flowering, much to the delight of the busy little honeyeaters, and the background chorus of bird calls seems to be echoing a general approval of the state of the world. A thrush came to stay for a few days and thrilled me with its song, and then a koel popped in. Some of my deciduous trees are starting to show their autumn colours but others are taking their time to change. We had a summer caller the other day, a fat, sleek magnificent red bellied black snake. It had obviously come from the creek via the chook coop, where the chooks and a colony of mice coexist. The three bulges in its body betrayed its indulgences en route. It was caught briefly in some netting that had been carelessly left on the ground, but, with help, it soon regained its freedom and was off, like molten metal poured over the ground. It has good stores for winter.

Autumn in our part of the world is a wonderfully rich time, a time to savour the fruits of summer gardens, even if they're not your own, and to enjoy the easy company of family and friends over the Easter break. I wouldn't live anywhere else.....Wamboin is blooming.....and you must agree, we have more to talk about than just the weather!



We welcome new patients to our Practice

2/80 Morisset Street, Queanbeyan, Phone 6299 6990

www.brindabellapractice.com.au

Opening Hours Mon, Tues & Thurs 8.00am – 7:30pm, Wed & Fri 8.00am – 5:00pm

Travel vaccines sports medicine asthma testing women's health skin cancer checks Diabetes Educator
Dietician free immunisation Physiotherapy Paediatrician exercise specialist counselling minor surgery.

Daily emergency appointments available



ESTABLISHED IN 1985

C.T.M. EXCAVATIONS

SPECIALISING IN WATER TANKS & FLAG POLES

"NO JOB TOO SMALL OR TOO HARD"

"Ring Lyle First"

Tip Truck & Bobcat Hire, 5.t Excavator with Rock Hammer & Grabber,
Trencher / Auger Available for Tree Planting & Rural Fencing,
Forklift, Dam Cleaning, Ripping & all site work.

All Building and Landscaping Supplies, Water Truck for hire.

Agent for Aqua-nova 2000 Aerated Wastewater Treatment system.

Approved Septic Tank Supplied & Installed. A registered Agent for Tank Master tanks.

Slashing & mowing, Garages & Sheds supplied & erected to council approval.

NSW lic # 86583C

Contact Lyle or Sue Montesin b/h 0412 677 554 (ah) 6238 1481 fax 6238 0308

130 The Forest Rd Bywong Email - lylesue@bigpond.com

**From a fuse to a new house
and other electrical needs**

CHRIS LODI ELECTRICAL

*Member of National Electrical
Association*

NSW Lic 193163C

You can be assured of a prompt,
efficient and courteous service

Mobile 0412 211 798 Ph:
6238 0068

chris.lodi@bigpond.com